



COMPANY PROFILE

INTRODUCTION

Spirit of excellence is our guiding principle, it is our constant dedication as we go about our daily work. We dedicate our full commitment to putting this spirit into development phase and into the distribution of new products , as well as working alongside with physicians, occupational therapists, physical therapists, dietitians, Pharmacists, Podiatrists, Dentists, Surgeons, Radiographers, Speech and language pathologists, Emergency Medical , Veterinary, Technicians and other users in our global sales and services activities. Our focus is on the requirements of our customers as well as “excellence” when it comes to the work carried out by our employees.

ABOUT US

SCM Pharmaceuticals is a wholly citizen owned registered distributor of pharmaceuticals , Surgical and Laboratory products. Commenced business in 2020 and since operation we have been following a culture of safety , quality and reliability. The driving force behind SCM Pharmaceuticals is a core of dedicated hand on management professionals whose experience spans decades of major distributions across Africa.

Our activities cover the full health care spectrum and are divided into main operating divisions, Pharmaceutical, Surgical, Laboratory and Medical supplies. SCM Pharmaceuticals strategically located in Gaborone.

WHY SCM PHARMACEUTICALS IS YOUR FIRST CHOICE PHARMACEUTICALS PARTNER

Our responsive senior management who have extensive industry experience.

Our broad technical and sector specialization .

01

Our strong culture of professionalism and respect.

02

Our capability to pursue opportunities across the globe.

03

04

Our ability to consistently execute and deliver both small and large scale distributions.

05

KEY STRENGTH

With our substantial industry knowledge and expertise we seamlessly supply the local market and the Southern African market with general Pharmaceutical, medical consumables. We offer comprehensive services and solutions tailor made for the local market and the Southern African market, which in turn enables our principles to serve their markets and consumer competitively.

*Excellent focus on front and execution by a committed and skilled sales and clinical team.

*Reliable deliveries and superior service offering out servicing the completion.

*Proven systems and controls that meet the required high compliance environment.

*Able to provide a quick entry to market and ensure stocks are readily available.

VISION

Our vision is to build, total brand value by innovating to deliver consumer value by consumer leadership faster, better and more complete health services through continuous improvement driven by the integrity teamwork and innovation of excellent people.

MISSION

To lead the health care industry in Botswana and Southern Africa with the highest standards, ensure medical equipment and consumer care products meet the needs of the community today and build capabilities to raise health care. Standards to meet the needs of future generations.

VALUE

Ethics, professionalism, integrity, quality of service innovation and trust are SCM Pharmaceutical core values.

These values are implemented in every aspect of the company and combined with our deep understanding of the market.

Teamwork

We are a team, we succeed together, when we can help our colleagues, we do when we need help we ask, we do not ignore a colleague who needs our assistance even if they have not asked for our help. We are also willing to participate in activities and projects that promote.

Reputation

Our reputation is one of our greatest assets; we actively work to build a reputation of excellence in our people, systems and our products, if our actions in any way contravene our shared values of team work communication, integrity and excellence, it can adversely impact on our positive reputation.

At SCM Pharmaceutical (Pty) Ltd we are committed to transparent reporting in accordance with our duties to all stakeholders. As such we engage regularly with stakeholders to understand their perceptions and pin point future trends, possible risks, determine material, issues and areas for strategic development. Engagement with stakeholders is aimed at building mutually beneficial relationships.

GOVERNANCE

Overview

"Accountability breeds responsibility"

Stephen R. Covey

SCM Pharmaceutical recognize that accountability and transparency and fundamental to investor trust and commercial sustainability . in order to provide a clear an transparent view of how the organisation is run and by whom along with the responsibility and principles that guide and inform its decision making, the corporate governance structures and processes of the organization are outline in detail in the section of SCM website.

THE BOARD

The board of SCM Pharmaceutical is responsible for setting the strategic objectives of the organization, it retains full and effective control of the company and is responsible for the implementation of the corporate vision of the organization. The board has the authority to appoint and remove the Chief Executive Officer (CEO) of the company. The board of directors recognizes its central, pivotal role from the perspective of the governance and its responsibility to ensure that the organization conducts itself in a fair responsible transparent and accountable manner.

The board determines the value and ethnics of SCM Pharmaceutical and has introduced a code of conduct which describes a clear set of values, policies and procedures and applies to all employees. The code conduct is regularly reviewed and if necessary.

While the board retains overall accountability for the organization it delegates the daily running for the group to the CEO and the executive committee. The executive committee assists the CEO in the day to day management of the group.

GUIDING PRINCIPLES

Through its board of directors SCM Pharmaceutical endorses and is committed to the recommendations of:

-The king code of corporate Governance Principles for Botswana

-The companies Act

SCM Pharmaceutical recognizes that being a good corporate citizen requires the organization to deliberate and act with fairness, responsibility and to consider more than just its financial performance, appraising the short and long term impacts of its operations on society and the environment at the same time.

Customer Satisfaction

We ensure customer satisfaction through highly motivated employees, well developed service strategies maximum quality for our products and services an experts and support

Regulatory Requirements

Our objectives is to meet the regulatory requirements of our target markets at all times.

Collaboration between the divisions

Interdisciplinary communication is ensured by regular meetings. These meetings aim to take decision on steering the company in the right direction, when reaching decisions of our customer while simultaneously taking the business interest of the company into account. These considerations need to be implemented in a well balanced approach.

SERVICE AND SERVICE PACKAGE

In your decision to purchase SCM Pharmaceutical products you have opened the gate to one of the best range and services and service work on the market. Technical maintenance remains a key, yet no longer the mainstays in SCM Pharmaceutical services and service sector. Our motivation, besides technical, safety and financial viability is to offer high degree of quality and reliability and reduce the ever growing complexity in your field to the highest individual level and one that reflects your needs.

BRANDS

SCM Pharmaceutical is striving to build up a portfolio of high quality brands supported by an excellent suppliers base. We boast on an impressive array of brands which have withstood the test of time.

DELIVERY

We have a reliable, efficient speed to customer and order turn around facility through our own fleet for local deliveries and out of town deliveries.

SERVICES

- Pharmaceutical
- Medical Devices & Consumables
- Animal health products & Agro chemicals
- Laboratory
- Surgical
- Pneumology/throat surgery
- Spinal surgery
- Urology
- Gynecology
- Orthopedics

SALES/ DEMAND CREATION

Our dynamic, competent telesales agents are on the phone constantly with our customers nationally. Our field sales team comprises of 5 representatives with representation in different regions of Botswana as a whole and 5 representatives for Southern Africa.

CUSTOMER BASE

SCM Pharmaceutical is a customer driven company, we set out to serve, respect and delight every customer. Our customers are made up of the following:

Domestic Business

- Community Pharmacies
- Retail/Community Pharmacies
- Private and Mine Hospitals
- Central medical stores
- Government hospitals and DHMTs
- Veterinary dealers
- Private clinics and dispensing Doctors
- Medical devices and Consumables
- Wholesalers

International Business

- Angola
- Lesotho
- South Africa
- Malawi
- Mozambique
- Namibia
- Swaziland
- Zambia
- Zimbabwe

Board
Of
Director

SCM

SCM OVERALL STRUCTURE

MEDHUB
Pharmacy

- Shop management
- Security and cleaning
- Delivery services
- Dispensary

Administration

- Finance
- Human Resources
- Procurement
- PR & Marketing
- Office Management

SCM
Warehouse

- Materials handling
- Logistics and delivery
- Inventory management
- SHE

SCM
Factory

- Production
- Materials handling
- Logistics and delivery
- Inventory management
- SHE

MEDHUB PHARMACY STRUCTURE

MEDHUB
Pharmacy

Dispensary

- Patients prescriptions
- Over-the-counter medicines
- Patient Consultations
- In-house GP/Specialist
- Medical stock/inventory management

Shop
Management

- Goods Received
- Merchandise
- Stock control
- Sales
- Accounts
- Telling/Cashier
- services
- Security
- Cleaning

Logistics
and
delivery

- Clients Orders Management
- Delivery services
- Fleet Management

SCM WAREHOUSE STRUCTURE

SCM
Warehouse

SHE

- Environmental Management
- Occupational health
- Employee safety

Stock
Management

- Goods receiving
- Stock taking
- Inventory management
- Merchandising

Logistics
and
delivery

- Fleet management
- Delivery services
- Goods dispatching

SCM FACTORY STRUCTURE

Scm Factory
Structure

SHE

- Environmental Management
- Occupational health
- Employee safety

Production

- Machinery & Tools
- Manufacturing/Operations
- Raw materials handling

Logistics
and
delivery

- Fleet management
- Delivery services
- Goods dispatching



AG-Staray 5000

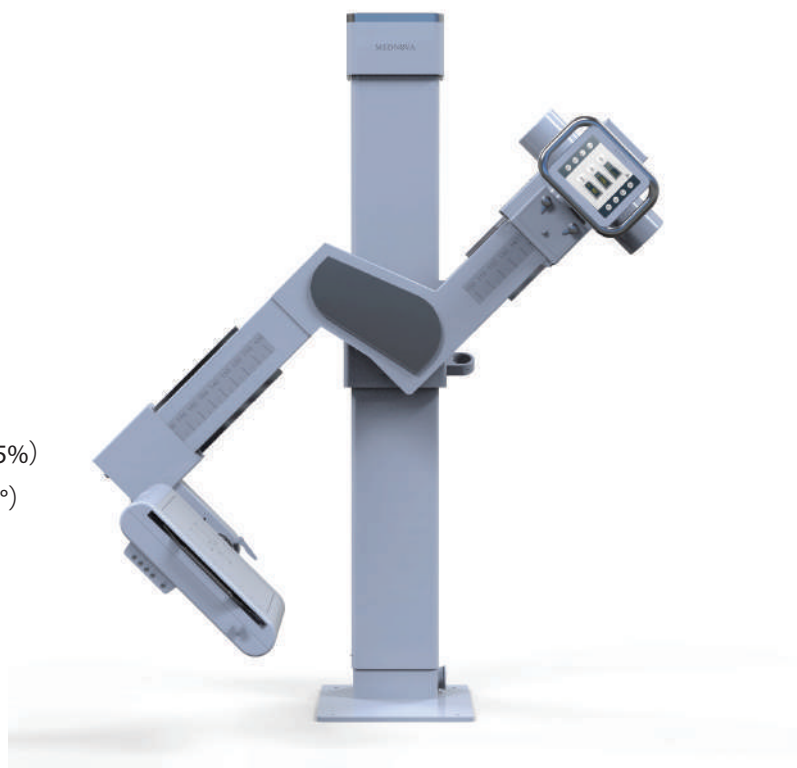
Digital Medical Radiography Systems-Double Column

- 1 Amorphous silicon wired flat panel detector
- 2 Effective pixels : ≥ 9 million
- 3 Pixel matrix : $\geq 3000 \times 3000$ pixels
- 4 Mechanical structure: intelligent electric double column
- 5 Stand movement mode: electric
- 6 Maximum operating frequency : 200kHz
- 7 Power : ≥ 50 kW

AG-Staray 5000

Digital Medical Radiography Systems-Z-Arm

- 1 Amorphous silicon flat panel detector
- 2 Effective pixels : ≥ 9 million
- 3 Pixel matrix : $\geq 3070 \times 3070$ pixels
- 4 Vertical range(scythe arm): 600mm \sim 1600mm ($\pm 5\%$)
- 5 Rotation range of the scythe arm: $-45^\circ \sim +135^\circ$ ($\pm 2^\circ$)
- 6 Power : ≥ 50 kW
- 7 Focus size : ≤ 0.6 mm/1.2mm
- 8 Focus power : Small focus: ≥ 20 kW
Large focus: ≥ 50 kW





AG-LY-1800/100

Portable Mobile X-Ray Machine

Power: 5.6kw

Tube current: 10-100ma

Tube voltage: 40-125kv

Adjustment range of loading time: 0.002s-4s

Curent time product: 0.1mAs- 200mAs under
AC power supply

0.1mAs -25mAs under battery power supply;

HZSD-3Y-1

Medical PSA Oxygen Plant

Product model: 3, 5, 10, 15, 20, 30, 40, 50, 60Nm³/h

O₂ Potency: ≥93% (V/V)

O₂ Dew point: ≤ -43 ℃

O₂ Pressure: 0.3-0.85 Mpa(adjustable) ≥ 0.1

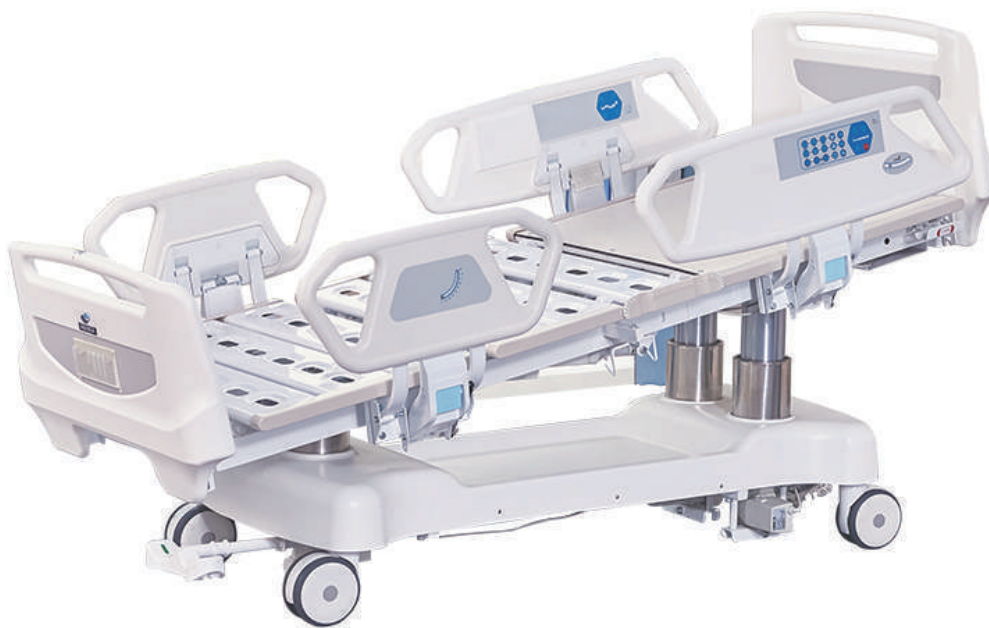
Operating pressure of the equipment: 0.4-0.8Mpa

Single-phase voltage: 220±22V

Three-phase voltage: 380±20V

Supply frequency: 50±1Hz





AG-BR002C

Seven Functions Electric ICU Hospital Bed With X-ray Bed Board

1. Electrostatic powder coating for the whole surface, 10-part cold rolled steel plate punching bed board, Cold-rolled steel bed frame.
2. Linak Motor from Denmark, three column straight lift system
3. Alarm system
4. ABS 4-piece big handrails, ABS detachable headboard and footboard, embedded handrail operator.
5. Electronic weighing system accurate to 0.01kg, with memory function, operation easily
6. CPR board quick release
7. Continue working for 8 hours without battery support
8. Foot-operated brake control system, four 125mm double silent castors
9. ABS shell one time formed dust cover, angle indicator

1. One-button electric CPR
 2. One-button reset
 3. One-button chair (similar to TV-position)
 4. Night light
 5. With weighing scale
- Color: Blue, Wooden, Wine Red, Green



AG-BY003C

Five Functions ABS Medical Electric Automatic Hospital Bed

1. Backrest max upward angle: 75°
2. Footrest max upward angle: 45°
3. Height adjustment: 480-780mm
4. Trendelenburg: 12°
5. Anti-trendelenburg: 12°

Features:

1. Overall size (L*W*H): 2200*1060*480-760mm
 2. Durable frame: made of cold-rolled steel plate, treated by electro-coating and powder-coating
 3. Detachable ABS headboard
 4. 4-part detachable ABS handrails
 5. Detachable ABS handrails
 6. Quiet and robust electric actuators provide reliable operation
 7. Remote handset control of all electrically operated functions and movements
 8. Fully tested sturdy construction capable of taking a maximum user weight of up to 250kg
 9. Central-controlled braking system
 10. Double-side silent wheels, $\phi 125\text{mm}$,
 11. Motor: Imported linak motor from Denmark
 12. With one ss height adjustable I.V pole, with Drainage hook
 13. With Battery backup
- Color: Blue, Wooden, Wine Red, Green



AG-BR006

Ten Functions Electric ICU Hospital Bed
 Size: 2000–2200*1000*(640–860)mm
 Height adjustment: 640–860mm
 Back Section adjustable: 0–75°
 Knee section adjustable: 0–45°
 Trendelenburg: 0–15°
 Anti-Trendelenburg: 0–15°
 Left and Right: 0–12°
 Footboard extend function: 2000–2200mm
 Chair function
 CPR function



AG-BR001

Eight Functions Electric ICU Hospital Bed
 Size: 2000–2200*1020*525–965mm HI–LOW: 525–965mm
 Back Section adjustable: 0–75°
 Knee section adjustable: 0–45°
 Trendelenburg: 0–15°
 Anti-Trendelenburg: 0–15°
 Length extend: 2000–2200
 Chair function
 Footboard curve function
 CPR function
 Color: Blue, Wooden, Wine Red, Green



AG-BR002B

Seven Functions ICU Bed with CPR
 Size: 2250*1050*450–790mm
 Height adjustment: 450–790mm
 Back Section adjustable: 0–75°
 Knee section adjustable: 0–45°
 Trendelenburg: 0–12°
 Anti-Trendelenburg: 0–12°
 Color: Blue, Wooden



AG-BR005

Seven Functions Electric ICU Bed
 Size: 2230*990*520–760mm
 Backrest max upward angle: 65°
 Footrest max upward angle: 43°
 Height adjustment: 530–710mm
 Trendelenburg: 10°
 Anti-trendelenburg: 10°
 Left tilt: 30°
 Right tilt: 30°
 Color: Blue, Wooden



A-02

Five Function Electric Hospital ICU Bed
 Size: 2200*980*520–740mm
 Backrest angle 0–75° +/- 5°
 Legrest angle 0–40° +/- 5°
 Height adjustable 520–740mm +/- 100mm
 Trendelenburg and reverse angle 0–12° +/- 2°



AG-BY009

Five Functions Electric ICU Hospital Bed
 Size: 2250*1050*575–815mm
 Height adjustment: 575–815mm
 Back Section adjustable: 0–75°
 Knee section adjustable: 0–45°
 Trendelenburg: 0–12°
 Anti-Trendelenburg: 0–12°

**AG-BY004**

Five Function Electric Hospital Bed
 Size: 2200*1060*450-700mm
 Backrest max upward angle: 75°
 Footrest max upward angle: 40°
 Height adjustment: 450-700mm
 Trendelenburg: 12°
 Anti-trendelenburg: 12°
 Color: Blue, Wooden

**AG-BY008**

Five Function Electric Hospital Bed
 Size: 2200*1100*480-760mm
 Backrest max upward angle: 75°
 Footrest max upward angle: 45°
 Height adjustment: 480-760mm
 Trendelenburg: 12°
 Anti-trendelenburg: 12°
 Color: White

**AG-BM005**

Five Functions Electric Hospital Bed
 Size: 2000*970*500-750 mm
 Backrest max upward angle: 75°
 Footrest max upward angle: 40°
 Height adjustment: 460-750mm
 Trendelenburg: 12°
 Anti-trendelenburg: 12°
 Color: Blue, Wooden

**AG-BM103**

Three Functions Electric Hospital Bed
 Size: 2150*980*460-750mm
 Backrest max upward angle: 75°
 Footrest max upward angle: 40°
 Height adjustment: 460-750mm
 Color: Blue, Wooden

**AG-BM119**

Three Functions Electric Hospital Bed
 Size: 2000 * 945 * 505-750mm
 Backrest max upward angle: 75°
 Footrest max upward angle: 40°
 Height adjustment: 505-750mm
 Color: Wooden

**AG-BM100**

Three Functions Electric Hospital Bed
 Size: 2150*980*250-700mm
 Backrest max upward angle: 75°
 Footrest max upward angle: 40°
 Height adjustment: 250-700mm
 Color: Wooden

**AG-BMY002**

Three Functions Hydraulic
Hospital Bed

Size: 2130*970*475-780
mm

Backrest max upward
angle 75° Footrest max
upward angle 40° Height
adjustment 450-700mm
Color: Blue, Wooden

**AG-BMY001**

Three Functions Hydraulic
Hospital Bed

Size: 2130*970*475-780
mm

Backrest max upward
angle 75° Footrest max
upward angle 40° Height
adjustment 475-780mm
Color: Wooden

**AG-BY104**

Three Functions Manual
And Electric Hospital Bed

Size: 2200 * 1060 *
440-760mm Backrest
max upward angle 75°
Footrest max upward
angle 40° Height
adjustment

440-760mm Color:
Blue

**AG-BMS001B**

Five Functions Manual
Hospital Bed

Size: 2150*950*
380-720mm Backrest max
upward angle: 75° Footrest
max upward angle: 40° Height
adjustment:
380-720mm Trendelenburg:
12° Anti-trendelenburg: 12°
Color: Blue

**AG-BMS001C**

Five Functions Manual
Hospital Bed

Size: 2150*1040*450-7
20mm Backrest max
upward angle: 75°
Footrest max upward
angle: 40° Height
adjustment:
450-720mm

Trendelenburg: 12° Anti-
trendelenburg: 12° Color:
Blue, Wooden

**AG-BMS002B**

Three Functions Manual
Hospital Bed

Size: 2120*960*450-750mm
Backrest max upward angle
75° Footrest max upward
angle 40° Height
adjustment 450-750mm
Color: Blue, Wooden



AG-BYS105

Two Functions Manual Hospital Bed

Size: 2120*970*540mm

Backrest max upward angle: 75°

Footrest max upward angle: 40°

Color: Blue, Wooden



AG-BYS106

Two Functions Manual Hospital Bed

Size: 2120*1050*540mm

Backrest max upward angle: 75°

Footrest max upward angle: 40°

Color: Blue, Wooden



AG-BMS101B

Two Functions Manual Hospital Bed

Size: 2150*980*520mm

Backrest max upward angle 75°

Footrest max upward angle 40°

Color: Blue, Wooden, Wine Red, Green



AG-BYS203

One Function Manual Hospital Bed

Size: 2130*960*540mm

Backrest max upward angle 75°

Color: Blue



AG-BYS204

One Function Manual Hospital Bed

Size: 2130*960*540mm

Backrest max upward angle: 75°

Color: Blue, Wooden



AG-BMS303

Flat Hospital Bed

Size: 2130*960*540mm

Color: Blue



AG-W001

With Ultra Low Function Five Functions
Electric Nursing Hospital Bed
Size: 1900*900*250-650mm
(Lift Adjustment)
Adjustable backplane: 0-75° Adjustable
leg plate: 0-35°
Overall forward tilt: 0-13°
Overall backward tilt: 0-13°
CPR function
Safe load: 150-175KG



KYH-DDC05

Electric Hospital Bed
Size: 2130*1130*560mm
Back angle: 0-72°
Roll angle: 0-30°
Color: Wooden



AG-W003

Three Functions Manual And Electric
Home Care Bed
Size: 2150*1050*450-720mm
Backrest max upward angle: 75°
Footrest max upward angle: 45°
Height adjustment: 450-720mm
Color: Wooden



A-176

Plus Electric Home Care Nursing Bed
1) bed surface with the anti slide and
sideslip plate.
2) when the bed are in a horizontal
position, can achieve the function of
left and right turn, angle 0-45±5°.
3) when power off, the handle crank
can be used to operate all the
functions manually.
1) Product Size: 2100*960*500(mm)
2) Packing Size: 2200*1500*550mm
3) G.W: 170kg



A-29

Three Function Electric Care Bed
Size: 2100*1090*280-700mm
Backrest angle 0-75°
Legrest angle 0-45°
Height adjustment: 280-700mm



A-179-1

Multifunctional Manual Homecare Nursing Bed
Size: 2100*960*500mm
Back section: 0-75°±5°
Leg up section: 0-20°±2°
Leg down section: 0-50°±2°
Turn left and right section: 0-45±5°
Chair position



AG-OB001

4-Crank Orthopedic Bed

Size: 2160*990*490mm Backrest max upward angle: 75° Right Footrest max upward angle: 40° Trendelenburg from 0 to 12°

Color: Blue



AG-OB003

Orthopedic Bed

Size: 2130*990*490mm

Functions:

Back section adjustable from 0 to 75° Knee section (left) adjustable from 0 to 40° Knee section (right) adjustable from 0 to 40° Color: Wooden



AG-OB005

Three Functions Hospital Orthopedic Bed

Size: 2160*990*490mm Backrest max upward angle: 75°

Right Footrest max upward angle: 40°

Left Footrest max upward angle: 40°

Color: Wooden



AG-OB004

Two Functions Hospital Orthopedic Bed

Size: 1850*900*500mm

Backrest max upward angle: 75°

Right Footrest max upward angle: 40°



AG-CB001

5-crank Al-alloy handrails Hospital Children Bed

Size: 1800*820*500mm

Backrest max upward angle: 75°

Color: White



AG-CB003

Steel Frame Children Hospital Bed

Size: 1850*750*500mm

Color: Blue



AG-BXG01

Stainless Steel Hospital bed
Size:2080*950*550-730mm
Backrest max upward angle: 75°
Footrest max upward angle: 40°
Height adjustment: 550-730mm
Color:Steel



XD-129

Stainless Steel Hospital Bed
Size:1900*600*700mm
Color:Steel



OLT-606E

Electric Bed
Size:90*190cm
Color:Brown



AG-FB003

Metal Frame Manual Folding
Hospital Bed
Size:1980*860*400mm
Back section: 0-80 °,6 level
Color:Brown



KX-07

Folding Bed Chair
Size:1780*670*300mm
Color:Navy/silver gray



KX-10

Folding Bed Chair
Size:1780*670*300mm
Color:Black/Gray/Navy/Blue/
Orange/Red



AG-ET001A1-850mm
Emergency Trolley

- 1) Size: 850*520*950mm
- 2) Made of high-strength ABS material



AG-ET014B1
Emergency Trolley

- 1) Size: 625*475*920mm
- 2) Made of high-strength ABS material



AG-P3
Emergency Trolley

- Size: 680*525*1000mm



AG-NT004B3
Emergency Trolley

- 1) Size: 720*470*920mm
- 2) Made of high-strength ABS material



AG-IT006B1
ABS Material IV Treatment Trolley

- 1) Size: 620*475*920mm
- 2) Made of high-strength ABS material, three layers



AG-MT005B1
Medicine Trolley

- 1) Size: 625*475*920mm
- 2) Made of high-strength ABS material



AG-MT011A1
Medicine Trolley

- 1) Size: 850*520*950mm
- 2) Made of high-strength ABS material



W3952
Medicine Trolley

- 1) Product Size: L850mm*W480mm*H970mm
- 2) Clear ABS file box: 1PC



W3726
Medicine Trolley

- 1) Product Size: L600mm*W500mm*H1000mm
- 2) Clear ABS file box: 1PC



W3727
Medicine Trolley

- 1) Product Size: L600mm*W500mm*H930mm
- 2) Clear ABS file box: 1PC



AG-LPT006B
Hospital ABS Clinical Trolley

- 1) Size: 750*480*1000mm
- 2) Made of high-strength ABS material



AG-IT001B3
Medical ABS IV Treatment Trolley

- 1) Size: 720*470*920mm
- 2) Made of high-strength ABS material

**AG-P1****Clinical Trolley**

1.Size: 680*525*1000mm

**AG-P10-T****Transfusion Car**

Size: 780*480*980mm
Material:Aluminum, steel ABS

**AG-P12****Clinical Trolley**

Size: 750 * 480 * 920mm
Material:Aluminum, steel ABS

**AG-P13****Transfusion Trolley**

Product Size:750x480x920mm
Material:Aluminum, steel ABS

**AG-AT007B3****Anesthesia Trolley**

- 1) Size: 850*520*950mm
- 2) Made of high-strength ABS material

**AG-AT001A3****Anesthesia Trolley**

- 1) Size: 750*480*1340mm
- 2) Made of high-strength ABS material

**W3714****Anesthesia Trolley**

Product Size: L740mm*
W520mm*H960mm
ABS material

**W3715****Anesthesia Trolley**

Product Size:L740mm*
W520mm*H960mm
ABS material

**W3721****Anesthesia Trolley**

Product Size: L600mm*
W500mm*H930mm
ABS material

**AG-CHT004****Patient Record Trolley**

- 1) Size: 410*400*950mm
- 2) ABS material

**AG-CHT003****Patient Record Trolley**

- 1) ABS material
 - 2) Double rows, 50 layers with 2 drawers,
- 1) Size: 750*410*980mm

**AG-MT014A****Computer Trolley**

- 1) Size: 660*520*1440mm
- 2) Made of high-strength ABS material



AG-WT008
Medical Workstation
Trolley

lifting load is 12-18kg
Height:1145mm-1395mm



AG-WT007
Notebook computer
trolley

worksurface:400±20mm,
worksurface height:750mm-1150mm,
lifting load ≤15Kg



AG-WT006
Medical Workstation
Trolley

Height adjustment range for LCD
and worksurface: 400±20mm,



AG-MT014A
ABS Medical Workstation
Trolley

1) Size: 660*520*1440mm
2) Made of high-strength ABS material



AG-GS001
Steel Medical Trolley

1) Material:made of the high
quality cold rolled steel ,
1.2mm thickness Tsteel
2) Size(L*W*H): 970*620*450mm



AG-GS002
Steel Medical Trolley

1) Material:made of the high
quality cold rolled steel ,
1.2mm thickness steel
2) Size(L*W*H): 970*620*460mm



AG-GS003
Steel Medical Trolley

1) Material:made of the high
quality cold rolled steel ,
1.2mm thickness steel
2) Size(L*W*H): 970*620*460mm



AG-GS004
Steel Medical Trolley

1) Material:made of the high
quality cold rolled steel ,
1.2mm thickness steel
2) Size(L*W*H): 950*630*435mm



AG-GS005
Steel Medical Trolley

1) Material:made of the high
quality cold rolled steel ,
1.2mm thickness steel
2) Size(L*W*H): 970*640*460mm



AG-GS006
Steel Medical Trolley

1) Material:made of the high
quality cold rolled steel ,
1.2mm thickness steel
2) Size(L*W*H): 970*660*450mm



AG-GS007
Steel Medical Trolley

1) Material:made of the high
quality cold rolled steel ,
1.2mm thickness steel
2) Size(L*W*H): 910*510*435mm



AG-GS008
Steel Medical Trolley

1) Material:made of the high
quality cold rolled steel ,
1.2mm thickness steel
2) Size(L*W*H): 970*645*470mm



AG-MT025

Steel Medical Trolley

Size: 620*450*900mm



AG-MT026

Steel Medical Trolley

Size(L*W*H): 670*415*890mm



AG-MT027

Steel Medical Trolley

Size: 650*450*855mm



AG-MT028

Steel Medical Trolley

Size: 620*450*875-955mm



AG-MT034B

Steel Medical Trolley

Size: 700*460*960mm



AG-MT035

Steel Medical Trolley

Size: 600*400*850mm



AG-AT015

Steel Anesthesia Trolley

Size: 600*400*1450mm



AG-AT016

Anesthesia Trolley

Size: 600*400*1450mm



AG-AT017

Anesthesia Trolley

Size: 100*40*145cm



AG-AT018

Anesthesia Trolley

Size: 600*400*950mm



AG-AT019

Steel Medical Trolley

Size: 600*400*950mm



AG-AT020

Steel Medical Trolley

Size: 600*400*950mm

**AG-ET017-1**

Steel Medical Trolley

Size: 630*440*880mm

**AG-MT035A**

Steel Medical Trolley

Size: 600*400*850mm

**AG-CHT011**

Patient Record Trolley

Size: 740*410*1059

**AG-CHT012**

Patient Record Trolley

Size: 410*400*950mm

**AG-P21**

Treatment Trolley

Size: 780*480*980mm

**W3713**

Treatment Trolley

Size: 600*400*850mm

**W3902**

Treatment Trolley

Product Size: L740mm*W520mm*
H960mm**W3903**

Treatment Trolley

Product Size: L740mm*W520mm*
H960mm**AG-UTA06**

Utility Trolley

- 1) Size: 539*366*900mm
- 2) ABS material, three layers

**AG-UTB07**

Utility Trolley

- 1) Size: 640*456*900mm
- 2) ABS material, three layers

**AG-LPT005A**

Utility Trolley

- 1) Size: 760*480*920mm
- 2) ABS material, two layers

**OM-TCA**Endoscopic Workstation
TrolleyMetal column: integral combination,
free loading and unloading;**OM-TCG**Endoscopic Workstation
TrolleyThe main structure is aluminum,
steel, and plastic parts;**ON-TCE**Endoscopic Workstation
TrolleyThe main structure is aluminum,
steel, and plastic parts;**AG-BT001**

Ultrasound Trolley

Desktop outer size: 71cm * 41cm
Desktop inner size: 64cm * 34cm
Packing size: 54cm * 37cm * 87cm**AG-BT002**

Ultrasound Trolley

Desktop outer size: 68cm * 44cm
Desktop inner size: 57cm * 36cm
Packing size: 69cm * 51cm * 38cm



AG-OBT002
Over bed table



AG-OBT010
Over bed table



AG-OBT012
Over bed table



AG-OBT013
Over bed table



AG-BC005
Bedside Cabinet



AG-BC016
Bedside Cabinet



AG-BC020
Bedside Cabinet



AG-BC025
Bedside Cabinet



AG-M001
Anti-decubitus Air
Mattress(Bubble)



AG-M003
Anti-decubitus Air
Mattress(Air-Jet)



AG-M004-1
4-Folding Foam Mattress



AG-M0016
Air Mattress



AG-SC001
Bedside Screen



AG-SC002
Bedside Screen



AG-ECC01
Examination Couch



AG-ECC07
Examination Couch

**CT-F10****Accompany Chair**

Specification:

Unfold Size:190*67*36cm

Folded Size:24*17*105cm

**OLT-803****Accompany Chair**

Specification:

Product Size:65*190cm,14kg

**SF-912****Accompany Chair**

Specification:

Product Size:1180*1720*450mm

**AG-AC001****Accompany Chair**

Specification:

Fold size:620*720*940mm

Unfold size:620*720*1920mm

**AG-AC003****Accompany Chair**

Specification:

Folded: 740 * 620 * 350mm

Unfolded size: 1900 * 620 * 200mm

**C-5017****Accompany Chair**

Specification:

Packing Size:200*80*50cm

**AG-AC010****Accompany Chair**

Specification:

size(cm):75*24*98cm

Unfold size(cm)186*75*30cm

**OLT-804-1****Accompany Chair**

Specification:

Product Size:100*186cm,23kg

**OLT-007****Accompany Chair**

Specification:

Product Size:80*190cm,
23kg/100*190cm,29kg**AG-AC011****Accompany Chair**

Specification:

Unfolded Size:Length:1920mm,
Height:260mmFolded Size:Length:800mm*
1050mm*790mm,seat height:380mm**AG-ACR01****Accompany Chair**

Specification:

Package Size : 830*780*780mm

**C-5009****Accompany Chair**

Specification:

Unfold Size:180*42*75cm
Fold Size:88*90*75cm

**AG-AC009**

Accompany Chair

Specification:

size (cm) : 66*68*41cm

Unfold size (cm) : 186*68*40cm

**C-5018**

Accompany Chair

Specification:

Unfold Size:180*83*42cm

Fold Size:73*83*94cm

**AG-AC007**

Accompany Chair

Specification:

Folded: 800 * 710 * 430 mm
(back section height 980mm)

Unfolded size: 2040* 710 *430 mm

**AG-AC005**

Accompany Chair

Specification:

Fold size:650*780*1020mm

Unfold size:2060*650*450mm

**C-5014**

Accompany Chair

Specification:

Unfold Size 185*73*45cm

Fold Size 94*82*56cm

**C-5013**

Accompany Chair

Specification:

Unfold Size 182*80*60cm

Fold Size 96*78*60cm

**C-5010**

Accompany Chair

Specification:

Unfold Size 180*61*43cm

Fold Size 85*83*61cm

**AG-LR01**

Accompany Chair

Specification:

668*1205*1178mm

**AG-AC012**

Accompany Chair

Specification:

Fold size:
830mm(L) × 850mm(W) × 420mm (H);Unfold size :
2100mm ((L) × 850mm(W) × 610mm (H);

**AG-TC001**

Infusion Chair

Specification:

Size: 770*680*1080mm

**AG-TC002**

Infusion Chair

Specification:

Size: 82 * 70 * 102cm

**AG-TC001B**

Hospital Infusion Chair

Specification:

size: 770*680*1080mm

**AG-AC006**

Infusion Chair

Specification:

Size: 73*84*105cm

**AG-TC003**

Infusion Chair

Specification:

Size:(cm)89*83*105

**AG-MCR16**

Massage Chair

Specification:

Full-size back roller offers
6 massage method

S&L backtrack

Wall Hugger

2 in 1 leg massager

Body Scan & auto adaption

4 full body massage programs

Rocking chair function

Adjustable backrest angle

**AG-MCR10**Electric Automatic
Multifunctional Massage ChairS/L roller path, allows a larger massage range,
and fit the body shape better than ever.Zero gravity: relief neck/spine stress, reduce
heart load. Foot & calf roller: full leg reflexology
massage

Rock rotating: maximize the relax sense

Sliding forward while reclining, help saving
placement space.

Bluetooth system for music and wireless remote

Full body air massage, relief tension

Multiple heating point, keep warm in winter

Auto extending leg part, fit user's leg length LED
light: help attract customers**AG-MCR01**

Massage Chair

Specification:

Zero Gravity

Foot roller

Thai-style foot scrape therapy massage

Full air pressure armrest massager

Leg part extending function

Carbon fiber far-infrared heating

L-shape back track

Pillow massage

Bluetooth connection

Sliding Function

Calf rolling massage function



AG-TWC003

Waiting Chair

Specification:

Size: 1750*680*770mm



AG-TWC002

Waiting Chair

Specification:

Size: 1750*680*770mm



AG-TWC06

Waiting Chair

Specification:

Size : 1580*680*770mm



D763

Waiting Chair

Specification:

Size: 1800*620*770mm



D762-T

Waiting Chair

Specification:

Size: 1800*620*770mm



M863

Waiting Chair

Specification:

Size: 1720*570*750mm



D862-PU

Waiting Chair

Specification:

Size: 1220*620*770mm



CS103-PU

Waiting Chair

Specification:

Size: 1755*660*780mm



AG-TWC004

Waiting Chair

Specification:

Size: 1910*750*800mm



LA103PU

Waiting Chair

Specification:

Size: 1755*670*785mm



GS103-PU

Waiting Chair

Specification:

Size: 1755*670*820mm



D763-PU-D

Waiting Chair

Specification:

Size: 1800*620*770mm



HS102-T
Waiting Chair

Specification:
Size: 1755*725*910mm



LA103-PU
Waiting Chair

Specification:
Size: 1755*670*785mm



D873-PU
Waiting Chair

Specification:
Size: 1850*680*850mm



D883H-D
Waiting Chair

Specification:
Size: 1800*620*780mm



ST103
Waiting Chair

Specification:
Size: 1900*730*1000mm



D763-PU-D
Waiting Chair

Specification:
Size: 1800*620*770mm



PUP053-H
Waiting Chair

Specification:
Size: 1770*655*880mm



PUP033-H
Waiting Chair

Specification:
Size: 1725*680*870mm



PUP013
Waiting Chair

Specification:
Size: 1640*660*877mm



AG-XB-Y1000

Hospital Single-Channel
Infusion Pump



AG-XB-Y1200

Hospital Double-Channel
Infusion Pump



5000A

Infusion Pump



SZHK-100

Single Channel Infusion Pump

**AG-700A**

Medical Electronic Nutrition Pump

**BFP-10**

Feeding Pumps

**AG-900B**

Medical Electric Injection Pump

**HF-610C**

Syringe Pump For Pet

**AG-902A**

Double-Channel Syringe Pump

**BD-300B**

Hospital Syringe Destroyer



AG-HS001

Hydraulic Transport Stretcher

Size: 210*85*59-91cm

Height: 59~91cm

Leg Rest: 0°~30°

Back Rest: 0°~75°

Mattress Base: 194x62cm

4 200mm central control wheels (4 Central Lock Castor)

5th Direction Wheel

Back Rest X Ray Translucent

Tredelenburg and Reverse: -15°~+15°

Powder Coated Steel Bed Frame

2 hydraulic pumps to control the height and front and rear tilt

The back is supported by a gas spring and can be quickly laid flat (CPR Quick Release)

Stainless Steel Side Rail

**AG-HS023****Bath Transport Stretcher**

Trendelenburg, anti-trendelenburg 0-15°

Material Stainless steel countertops
PU material bath tank
The hydraulic control pedal,
two independent hydraulic pump

Packing 198 * 72 * 67cm

Weight 134kg

**AG-HS005****Luxurious Hydraulic Rise-and-Fall Transport Stretcher**

Size: 2120*820*610-900mm

1. Two American pumps, stable and durable
2. CPR, full bed x-ray
3. With PU waterproof mattress (50mm)
4. American bakelite plate

**AG-HS011****Transport Stretcher**

Size: 3650*640*650-950mm

Specification:

- 1) material is stainless steel
- 2) central locking system
- 3) Two trolleys join together, lift and down separately
- 4) Backrest max upward angle: 75°

**AG-HS020****Transport Stretcher**

1. Size: 1930*663*510-850mm, Backboard Lifting angle 0-70°
2. Safety loading: 170KG
3. Height lifting system: Use Metal rocker

**AG-HS002****Manual Transfer Stretcher**

Functions:

1. Height is adjustable from 540mm to 840mm (Operated manually)
 2. Locking function with central locking system
 3. Back section is controlled by spring
- Size 1930*640*540--840mm
- Safe working load

**AG-HS025****Hydraulic Transport Stretcher**

1. L1880mm*W620mm*H560-890mm,
2. Back adjust 0-75°.
3. Foot adjust 0-40°.
4. Tilt adjust -18°-18°.
5. Safe working load: 250KG.

**AG-HS013****Transport Stretcher**

Size: 1900*630*800mm

Material:

1. Stainless steel frame
2. ABS bed platform
3. Artificial leather mattress
4. IV pole
5. 4 wheels

**AG-HS014****Manual Transport Stretcher**

Size: 1900*630*600-800mm

Material:

1. Stainless steel frame
2. Artificial leather mattress
3. IV pole
4. 4 wheels

**AG-HS003****Connecting Stretcher Trolley**

Size: 3650*640*640-970mm

Material:

Aluminum alloy, durable

Functions:

1. Height adjustable 640mm to 970mm, Back section: 0-75°
2. Locking function with central locking system
3. Two trolleys join together, lift and down separately

**AG-HS007****Electric Transport Stretcher**

Size: 2120*800*930/630mm

Material:

X-ray (Electric panel made in America), CPR

4-function:

1. Backrest max upward angle: 75°
2. Height adjustment: 610-930mm
3. Trendelenburg: 12°
4. Anti-trendelenburg: 12°

**AG-HS021****Surgery Exchange Car**

1. Size: 1900*640*730-940mm

2. Functions:

Backrest max upward angle: 75°

Height adjustable

Outside wheel decline and inside wheel rise transition (one-click system)

**AG-HS010****Electric Transport Stretcher**

Size: 1930*700*630-930mm

1. Backrest max upward angle: 75°

2. Height adjustment: 630-930mm

3. Trendelenburg: 15°

4. Anti-trendelenburg: 15°

**AG-2B7F****Spine Board**

1. with safe belts
2. allowed X-rays

**AG-2B3****Aluminum Alloy Foldaway Stretcher**

1. with wheels, outriggers and can be folded.
2. made of high strength aluminum alloy material and the water-tightness leather materials.

**YJK-E-4-1****Soft Stretcher**

1. made of double thick Oxford cloth
2. total of 10 handles.
3. with two safety straps
4. can be folded and put into a hand bag

**AG-4B4****Aluminum Loading Ambulance Stretcher**

1. made of high-strength aluminum alloy thick-wall pipes.
2. The bed surface is made of foamed cushion and the adjustable back

**YJK-F5****Multifunctional Stretcher**

1. made of special composite plastic
2. An extra rope
3. Can be used for fire emergency rescue

**YJK-F10****Spinal Fixation Plate**

1. material : high-density plastic polyethylene
2. suitable for rescue in various harsh environments

**YJK-H-7****Chest Stretcher**

1. suitable for cervical and spinal fixation in traffic accident rescue
2. rigid plate for spinal fixation

**YJK-CPR-3****First Aid Stretcher Equipment CPR Board**

1. made of high density polyethylene plastic
2. Loading : ≤159kg



AG-AP001

Medical Liquid Suction Machine

- 1.Pump structure: membrane type
- 2.Limit negative pressure value:0.09MPa
- 3.Suction rate:20 L/min
- 3.Suction bottle: 2500ml/piece,2
- 4.Power voltage: ± 1 Hz
- 5.Input power: 400VA
- 6.Noise: ≤ 65 dB



AG-AP0C3

Mobile Electric Suction Device

- 1.Power voltage:AC220V $\pm 10\%$ 50Hz
- 2.Negative pressure: ≥ 0.09 MPa(680mmHg)
- 3.Suction rate: ≥ 40 L/min
- 4.Range of negative pressure:0.013MPa ~ 0.09 Mpa(680mmHg)
- 5.Suction bottle:2500ml x 2
- 6.Noise : ≤ 55 dB
- 7.Input power : 300VA
- 8.Working type : intermittent loading,continuous operation



AG-AP0C4

Gynecological Electric Suction Device

- 1.Power voltage:AC220V $\pm 10\%$ 50Hz
- 2.Negative pressure: ≥ 0.09 MPa(680mmHg)
- 3.Suction rate: ≥ 25 L/min
- 4.Range of negative pressure:0.013MPa ~ 0.09 Mpa (680mmHg)
- 5.Suction bottle:2500ml x 2
- 6.Noise: ≤ 55 dB
- 7.Input powe:400VA
- 8.Working type:intermittent loading,continuous operation



AG-AP0A2

Electric Sputum Suction Device

- 1.Power voltage AC 220V $\pm 10\%$ 50Hz
- 2.Suction rate ≥ 15 L/min
- 3.Negative pressure range 0.013-0.07Mpa(600mmHg)
- 4.Suction bottle 1000ml
- 5.Input power 150VA
- 6.Pump structure oil-free self-lubricated pump
- 7.Noise ≤ 50 dB
- 8.Working type:intermittent loading,continuous operation



AG-AP0D1

Mobile Electric Suction Device

- 1.Power voltage:AC220V $\pm 10\%$ 50Hz
- 2.Negative pressure: ≥ 0.09 MPa(680mmHg)
- 3.Suction rate: ≥ 20 L/min
- 4.Range of negative pressure:0.013MPa ~ 0.09 Mpa(680mmHg)
- 5.Suction bottle:2500ml x 2
- 6.Noise: ≤ 55 dB
- 7.Input power:400VA
- 8.Working type:intermittent loading,continuous operation



AG-XYQ01

Aspirator

- 1.Max vacuum ≥ 0.09 MPa (680mmHg)
- 2.Adjustable vacuum range 0.02MPa ~ 0.09 MPa (150 ~ 680 mmHg)
- 3.Flow rate ≥ 32 L/Min
- 4.Noise ≤ 60 dB(A)
- 5.Storage bottles 2500mLx2(glass)
- 6.Power supply AC220V 50Hz
- 7.Input 150VA



AG-AP003

Mobile Electric Suction Device

- 1.Power voltage : AC220V $\pm 10\%$ 50Hz
- 2.Negative pressure : ≥ 0.09 MPa(680mmHg)
- 3.Suction rate first level : ≥ 35 L/min,second level ≥ 15 L/min
- 4.Range of negative pressure : 0.013MPa ~ 0.09 Mpa(680mmHg)
- 5.Suction bottle : 500ml x 2 /2500mlx 2
- 6.Noise : ≤ 55 dB
- 7.Input power : 400VA
- 8.Working type:intermittent loading,continuous operation



AG-XYQ02

Aspirator

- 1.Max vacuum ≥ 0.09 MPa (680mmHg)
- 2.Adjustable vacuum range 0.02MPa ~ 0.09 MPa
- 3.Flow rate ≥ 32 L/min
- 4.Noise ≤ 60 dB (A)
- 5.Power supply AC220V 50 Hz
- 6.Input power 150VA



AG-XYQ05

Aspirator

1. Limit negative pressure value: ≥ 0.09 Mpa (680 mmHg)
2. Negative pressure adjustment range: 0.02Mpa (150mmHg) \sim limit negative pressure value
3. Instantaneous pumping rate: ≥ 80 L/min
4. Liquid storage bottle: 4000mLx2+2000mLx2 (PC)
5. Power supply: AC 220V 50 Hz
6. Input power: 280 VA



YK600-1

Respiratory Treatment Device for Removing Sputum

- 1.Display: Large LCD screen,man-machine conversation interface
- 2.Memory function: Memory time and frequency, stop/start working at any time without shutting down power and operation
- 3.Output mode: Single output
- 4.Voltage: AC220V±22V, 50HZ±1HZ
- 5.Ultra quiet design: ≤50dB, Electromagnetic-shielding device applied in the whole machine, nil interference, No radiation
- 6.Mode: Automatic, hand-operated mode(P1,P2,P3,P4)
- 7.Vibration amplitude: ≤5mm+0.6mm,setting time1-60min,and percussion frequency 10-60HZ
- 8.Flexible shaft: 1.8M, pluggable/ stainless steel,easy to clean, disinfect and change.
- 9.Feedback control circuit: Stable frequency, good penetrating power,easy for expectoration
- 10.Percussion head : A variety of models Outward appearance Streamlined integrative/portable machine, rubber tire



YK700-1

Respiratory Treatment Device for Removing Sputum

- 1.Display: Large LCD screen,man-machine conversation interface
- 2.Memory function: Memory time and frequency, stop/start working at any time without shutting down power and operation
- 3.Output mode: Single output
- 4.Voltage: AC220V±22V, 50HZ±1HZ
- 5.Ultra quiet design: ≤50dB, Electromagnetic-shielding device applied in the whole machine, nil interference, No radiation
- 6.Mode: Automatic and hand-operated mode
- 7.Vibration amplitude: ≤5mm+0.6mm,setting time1-60min,and percussion frequency 10-60HZ
- 8.Flexible shaft: 1.8M, pluggable/ stainless steel,easy to clean, disinfect and change.
- 9.Feedback control circuit: Stable frequency, good penetrating power,easy for expectoration
- 10.Percussion head : A variety of models



YK700-1H

Vibration Machine for Lung

- 1.Display: Large LCD screen,man-machine conversation interface
- 2.Memory function: Memory time and frequency, stop/start working at any time without shutting down power and operation
- 3.Output mode: Single output
- 4.Voltage: AC220V±22V, 50HZ±1HZ
- 5.Ultra quiet design: ≤50dB, Electromagnetic-shielding device applied in the whole machine, nil interference, No radiation
- 6.Mode: Automatic and hand-operated mode
- 7.Vibration amplitude: ≤5mm+0.6mm,setting time1-60min,and percussion frequency 10-60HZ
- 8.Flexible shaft: 1.8M, pluggable/ stainless steel,easy to clean, disinfect and change.
- 9.Feedback control circuit: Stable frequency, good penetrating power,easy for expectoration
- 10.Percussion head : A variety of models Outward appearance Streamlined integrative/portable machine, rubber tire.



YB-DX-98-7

Electric Portable Absorb Phlegm unit

1. Negative pressure limit: ≥0.08MPa(600mmHg);
- 2.Negative pressure adjustable range: 0.02~0.08MPa(150~600mmHg);
- 3.Pumping rate: hole (air vent)≥10L/min, terminal≥6L/min;
- 4.Power: AC220V±22V, 50Hz±1Hz;
- 5.Input: ≤30VA;
- 6.Noise: ≤60dB;
- 7.Collection container capacity: 1000ml;
- 8.Temperature: +5~+35, relative humidity: 25 no exceeding 80%, atmospheric pressure: 86KPa~106KPa.



YB-DX-98-7A

Electric Portable Absorb Phlegm unit

- 1.Negative pressure limit: ≥0.08MPa(600mmHg);
- 2.Negative pressure adjustable range: 0.02~0.08MPa (150~600mmHg);
- 3.Pumping rate: hole (air vent)≥20L/min, terminal≥15L/min;
- 4.Power: AC220V±22V, 50Hz±1Hz;
- 5.Input: ≤60VA;
- 6.Noise: ≤60dB;
- 7.Collection container capacity: 1000ml;
- 8.Work environment: temperature: +5~+35, relative humidity: 25 no exceeding 80%, atmospheric pressure: 86KPa~106KPa.



ACS205

Touch Screen Airway Clearance System

- 1.Display:10.4" LCD screen
- 2.Atomization Function:Yes
- 3.Timing Range:1min~100min
- 4.Manual Frequency Range: 2Hz~26Hz
- 5.Vibration Intensity Range:1~11
- 6.Pressure Range:0.5~3.9Kpa
- 7.Power Source:AC 100V~240V 50Hz/60Hz



QZD-A

Automatic Gastric lavage machine

- 1.Power supply: AC220V \pm 22V, 50Hz \pm 1Hz;
- 2.Input: \leq 140VA;
- 3.Noise: \leq 65dB(A);
- 4Automatic control flushing flow: \leq 350ml/time, automatic control suction flow \leq 450ml/time;
- 5Automatic control suction flow is 50~150ml/time more than automatic control flushing flow;
- 6.Flow rate: \geq 2L/min;
- 7Automatic control panch in and out time: \leq 30s/time.

QZD-B

Automatic Gastric Lavage Machine

- 1.Power supply: AC220V \pm 22V, 50Hz \pm 1Hz;
- 2.Input: \leq 140VA;
- 3.Noise: \leq 65dB (A);
- 4.Paunch in pressure set: \leq 0.067MPa;
- 5.Paunch out pressure set: \geq -0.067MPa;
- 6.Paunch in flow set: \leq 350ml/time;
- 7.Paunch out flow set: \leq 450ml/time;
- 8.Paunch in and out time: \leq 30s/time.



QZD-C

Automatic Gastric Lavage Machine

- 1.Power supply: AC220V \pm 22V, 50Hz \pm 1Hz;
- 2.Input: \leq 140VA;
- 3.Noise: \leq 65dB (A);
- 4.Paunch in pressure set: \leq 0.067MPa;
- 5.Paunch out pressure set: \geq -0.067MPa;
- 6.Paunch in flow: \leq 350ml/time, out flow \leq 450ml/time;
- 7.Paunch in and out time: \leq 30s/time;
- 8.The paunch in and out pressure can be freely set by different patients;



DEFIBRILLATOR



AG-DE001A

Medical Defibrillator(Monophasic)

Size: 41*33*20cm,

Main function: monophasic single wave, asynchronous, external defibrillation

Charging time :At 360J less than 10 sec



AG-DE002C

Medical Defibrillator(Biphasic)

Package Size: 56x46x47cm,

Defibrillator type:Manual, Synchronized, Asynchronized

Standard Adult/Pediatric Paddles

Reusable external adult paddles(pediatric paddles integrated)



AG-DE005

Defibrillator

ECG Cable (5 Leads) 1Pc

AED Pad connector 1Pc

AED Pad1pc

Ground Cable 1Pc

Power Cable 1Pc

Thermal Paper Role 1Pc

Products size: 328*236*281 mm



AED7000 Plus

Automatic External Defibrillator

Biphasic Truncated exponential

Audible Prompts:19 audible prompts

Visual Prompts:LED prompts;Automatic Self-test



AG-DE0A6L

Automated External Defibrillator(AED)

Main unit for adult and pediatrics 4 energy

AED pad

Carry bag

User manual

Battery



AG-DE0A1

AED Cabinet

Durable steel

Material with alarm and strobe light

Packing Size:530*440*430mm



AG-OT007

Electric hydraulic operating table

Specifications:

Overall Length: 2050mm

Width: 550mm

Dimension of section:

Head Section: 250x550mm

Back Section: 465x550mm

Waist Section: 75x550mm

Seat section: 550x550mm

Leg Section: 600x240mm

Min Height: 600mm

Max Height: 950mm

Adjust: 350mm

Range of movements:

Reversed Trendelenburg: $\geq 25^\circ$

Trendelenburg: $\geq 25^\circ$

Lateral Tilt: $\geq 15^\circ$

Backward and Forward Movements: ≥ 400 mm

Adjustment of sections:

Head Section Raised from the horizontal: $\geq 45^\circ$

Head Section lowered from the horizontal: $\geq 90^\circ$

Back Section Raised from the horizontal: $\geq 75^\circ$

Back Section lowered from the horizontal: $\geq 30^\circ$

Leg Section Lowered from the horizontal: $\geq 90^\circ$

Leg section opened: $\geq 90^\circ$

Back rise(When optional): ≥ 80 mm

Horizontal rotation of tabletop: $0 \sim 180^\circ$

With V and anti-V (when optional)



AG-OT009

Electric Operating Table

Reversed Trendelenburg $\geq 20^\circ$
 Trendelenburg $\geq 15^\circ$
 Lateral Tilt $\geq 15^\circ$
 Head Section $45^\circ - 90^\circ$
 Back Section Raised from the horizontal $\geq 45^\circ$
 Kidney Bridge Elevated $\geq 80\text{mm}$
 Leg Section Lowered from the horizontal $\geq 90^\circ$
 Leg section opened $\geq 90^\circ$
 Backward and Forward Movements $\geq 40\text{cm}$
 Lifting speed 4~16mm/s



AG-OT030

Electric Operating Table Table

Adjustment Forward and Backward $\geq 245\text{mm}$
 Reversed Trendelenburg $\geq 20^\circ$
 Trendelenburg $\geq 15^\circ$
 Lateral Tilt $\geq 15^\circ$
 Table Section Adjustment Head Section Raised from the horizontal $\geq 30^\circ$
 Head Section Lowered from the horizontal $\geq 45^\circ$
 Back Section Up from the horizontal $\geq 45^\circ$
 Back Section Down from the horizontal $\geq 5^\circ$
 Kidney Rising $\geq 80\text{mm}$
 Leg Section Down from the horizontal $\geq 90^\circ$
 Leg Section Opened $\geq 90^\circ$
 Rising Speed 3~16mm/s



AG-OT650

SUS304 Stainless Steel Accessories Hydraulic Operating Table

Electric Hydraulic Operating Table
 Trendelenburg/Reverse $30^\circ/30^\circ$
 Lateral Tilt(left/right) $20^\circ/20^\circ$
 Head Plate Up/Down $60^\circ/90^\circ$
 Back Plate Up/Down $75^\circ/50^\circ$ (optional electric)
 Leg Plate Up/Down $30^\circ/90^\circ$
 Kidney 130mm(optional electric)
 Weight Capacity 300kg
 Flex 105° 45° 30°
 Reflex 230° 20° 30°



AG-OT032

Electric Hydraulic Operating Table

1. Low position and large lift, the table top lift stroke is up to 450 mm, and there is sufficient space for use with the C-arm.
2. Longitudinal translation is up to 500mm, without the need for reverse placement of the patient or pre-adjustment of the table, the whole body C-arm fluoroscopy and imaging can be performed on the patient.
3. Equipped with a built-in emergency power supply, which can be used in emergency after the network power is cut off.
4. Built-in waist bridge
5. The bed surface can form a V-shaped posture of 100° , and a reverse V-shaped posture of 220°
6. The bed surface can be equipped with memory foam, which can be re-naturally plasticized according to the patient's body temperature and body shape, and it is detachable.
7. Alternate operating system
8. The main material is SUS304 stainless steel, high-strength cast iron, aluminum alloy, strong and rigid.
9. Standard one-key horizontal reset.



AG-OT008

Electric Hydraulic Operating Table

Reversed Trendelenburg $\geq 30^\circ$

Trendelenburg $\geq 25^\circ$

Lateral Tilt $\geq 25^\circ$

Backward and Forward Movements $\geq 530\text{mm}$

Head Section Raised from the horizontal $\geq 45^\circ$

Head Section lowered from the horizontal $\geq 90^\circ$

Back Section Raised from the horizontal $\geq 75^\circ$

Back Section Lowered from the horizontal $\geq 30^\circ$

Leg Section Lowered from the horizontal $\geq 90^\circ$

Leg Section opened $\geq 90^\circ$

Kidney Bridge Elevated (When optional) $\geq 80\text{mm}$

Lifting speed 4~16mm/s



AG-OT028

Manual Operating Table

Dimension of table top:

Overall Length 1950mm Width 550mm

Table top of from floor:

Max Height 530mm Min Height 780mm

Adjust Height 250mm

Adjustments of Head Section: Descend 100mm



AG-OT015

Manual hydraulic Operating Table

Reversed Trendelenburg $\geq 15^\circ$

Trendelenburg $\geq 20^\circ$

Lateral Tilt $\geq 15^\circ$

Head Section Raised from the horizontal $\geq 45^\circ$

Head Section lowered from the horizontal $\geq 90^\circ$

Kidney Bridge Elevation $\geq 100\text{mm}$

Back Section Raised from the horizontal $\geq 45^\circ$

Leg Section Lowered from the horizontal $\geq 90^\circ$

Back ward and Forward movement $\geq 400\text{mm}$

BS Operating Table

This product is used in hospital operating room for surgery such as head, neck, chest and abdomen, perineum and limbs,, obstetrics and gynecology, ENT, orthopedics.surgery



AG-LT014B LED

LED Shadowless Operation Double Three Sum Five Surgical Lamp

Illuminance: LED3: $\geq 120,000\text{Lux}$ LED5: $\geq 160,000\text{Lux}$

Colour temperature: $4500 \pm 200\text{K}$

Colour reduction index(Ra): 96

Illuminance depth: 1020mm/1150mm

Rated power of bulb: 3.2V/1W

Total irradiance: LED3: 380W/m^2 LED5: 510W/m^2

Size of light field: 200~350mm

Service life of illuminant: 50,000h

Power supply voltage: AC110-240V, 50/60Hz

Lowest height of installation: 2900mm

Total power consumption: 140W

Total LED bulb quantity : 294 pcs



AG-LT022

LED Surgical Lamp

The rotating arm rotates around the fixed seat $\geq 360^\circ$
 The balance arm rotates around the rotating arm $\geq 300^\circ$
 The stand rotates around the balance arm $\geq 300^\circ$
 Weft support rotation $\geq 180^\circ$
 The lamp holder rotates around the weft support $\geq 180^\circ$
 Balance arm moves up and down up $\geq 40^\circ$ down $\geq 40^\circ$



AG-LT017B

Operating lamp

Content Reflector diameter 700mm Reflector diameter 500mm
 Center Light illuminance 120klx~140klx 80klx~120klx
 Spot diameter (d10) $\geq 180\text{mm}$ $\geq 160\text{mm}$
 Column depth $\geq 700\text{mm}$ $\geq 600\text{mm}$
 Color temperature 4500 \pm 500K
 Increasing temperature ≤ 11
 Color rendering Index (CRI) ≥ 92



AG-LT013(4+4)

LED shadowless operation lamp-double

Illuminance: $\geq 120,000\text{Lux}$
 $\geq 120,000\text{Lux}$
 Colour temperature: 4800 \pm 200K
 Colour reduction index(Ra): 96
 Illuminance depth: 1050mm
 Total irradiance: 420W/m²
 Size of light field: 120~240mm
 Lamp head
 diameter: 550mm/550mm Rated
 power of bulb: 3.2V/1W
 Service life of illuminant: 50,000h
 Power supply voltage: AC110-240v, 50/60Hz
 Lowest height of installation: 2900mm
 Total power consumption: 160W
 Total LED bulb quantity : 104pcs



AG-LT024(3+4)

Shadowless Operating lamp

Illuminance L3C: $\geq 140,000\text{Lux}$ L4C: $\geq 160,000\text{Lux}$
 Color temperature 3500 \pm 300K, 4000 \pm 300K, 4500 \pm 300K, 5000 \pm 300K
 Color reduction index(Ra) 96, R9 97, R13.98
 Total irradiance LED3: 380W/m² LED4: 380W/m²
 Size of light field 125~250mm
 Service life of illuminant 50,000h
 Power supply voltage AC110-240v, 50/60Hz
 Lowest height of installation 2900mm
 Total power consumption 90W
 Total LED bulb quantity 187pcs
 Green ENDO YES
 Dimming type Analog dimming
 Packing Size/ctn 123 \times 73 \times 43cm GW: 63kg NW: 52kg
 Packing Size/ctn(LED4) 100 \times 100 \times 27cm GW: 18kg NW: 15kg
 Packing Size/ctn(LED3) 25 \times 89 \times 89cm GW: 14kg NW: 11kg



AG-LT019B

Operating Lamp

Reflector diameter	750mm
Center illuminance	40~160klx
Spot diameter(d10)	195mm
Spot diameter(d50)	100mm
Light beam depth	≥850mm
Color temperature	4200±300k
Color rendering index	Ra>95



AG-LT024-4

Operating lamp

Illuminance:L4C	≥160,000Lux
Color temperature:	3500±300K, 4000±300K, 4500±300K, 5000±300K
Color reduction index(Ra):	96 ,R9 97, R13.98
Total irradiance:	380W/m ²
Size of light field:	125~250mm
Service life of illuminant:	50,000h
Power supply voltage:	AC110-240v, 50/60Hz
Lowest height of installation:	2900mm
Total power consumption:	50W
Total LED bulb quantity:	112pcs
Green ENDO:	yes
Dimming type:	Analog dimming



AG-LT020A-1

LED Operating Light

Reflector diameter	550mm
Center illuminance	120000Lux
Spot diameter(d10)	≥150mm
Spot diameter(d50)	≥120mm
Light beam depth	≥900mm
Color temperature	4200±300k
Color rendering index	Ra>92
Maximum illuminance	Ec<500W/m ²
Brightness adjustment:	10 continuous adjustment.
Height:	1500-2500mm.



AG-LT018

On Stand LED Examination Light Surgical Lamp

Model	AG-LT018
Input Power	36VA
Main fuse	F2AL 250V × 1
Emergency power supply Voltage:	DC24V(+5%~-10%)
Center illuminance	10klx≤Ec≤80klx
Spot diameter (D10)	≥80mm
Spot diameter (D50)	≥d10/2
Color temperature	3500K≤Tc≤5000K
Lamp around the zonal support rotation	≥40°
Lamp Life	50,000 hours
Bulb	12 Particel beads



AG-58(new)

Surgical pendant

Standard Gas Outlets: 2*Oxygen, 2*Vacuum,
Optional :

1. colors and shapes for distinction
2. Using cycle for more than 20,000 times
3. Using Second Sealing technology with three status (open, stop, pull), can be maintained with gas

Electrical sockets: 8pcs 220V, 10A

Grounding terminal: 2pcs 220V, 10A

Injection Pole: 2set Stainless Steel

Infusion Pole: 2 set Stainless Steel

Drawer: 1pc



AG-360

Surgical pendant

Electrical sockets: 8pcs 220V, 10A

Grounding terminal: 2pcs 220V, 10A

Network interface: 1pc RJ45

Injection Pole: 1set Stainless Steel

Infusion Pole: 1set Stainless Steel

Drawer: 1pc



AG-360S-2

Surgical pendant

Standard Gas Outlets: 2*Oxygen, 2*Vacuum

Optional :

1. colors and shapes for distinction
2. Using cycle for more than 20,000 times
3. Using Second Sealing technology with 3 status (open, stop, pull), can be maintained with gas.

Electrical sockets: 8pcs 220V, 10A

Grounding terminal: 2pcs 220V, 10A

Network interface: 1pc RJ45



AG-45

Surgical pendant

Standard Gas Outlets: 2*Oxygen, 2*Vacuum, 2*Medical Air

Optional :

1. colors and shapes for distinction
2. Using cycle for more than 20,000 times
3. Using Second Sealing technology with 3 status (open, stop, pull), can be maintained with gas.

Brake System: Pneumatic brake

Electrical sockets: 6pcs 220V, 10A

Grounding terminal: 2pcs 220V, 10A

Injection Pump: 1 set Infusion Pump: 1 set

Drawer: 2 pcs Wet Part: One Arm



AG-18C-3

Surgical pendant

Standard Gas Outlets: 1*Oxygen, 1*Vacuum, 1*Medical Air

Optional :1. colors and shapes for distinction

2. Using cycle for more than 20,000 times
3. Using second sealing technology with 3 status (open, stop, pull), can be maintained with gas.

Brake System Pneumatic brake

Electrical sockets 6pcs 220V, 10A

Grounding terminal 2pcs 220V, 10A

Network interface 1pc RJ45

Injection Pump 1 set Infusion Pump 1 set Drawer 2 pcs

Storage Basket:2pcs

Lighting Lamp:2 sets



AG-HFP-SS90/160-1

Surgical pendant

- * 1 double arm Arm, 950mm+800mm, The load capacity is 160kg, Pneumatic ;
- * 1 Column length (L=1000mm) ;
- * 1 Guideway extension arm ;
- * 1 Height-adjustable infusion stand ;
- * 3 Gas socket (German Standard import)(O2x1, Airx1, Vacx1) ;
- * 6 Multi-purpose power socket ;
- * 1 Communication Socket RJ45
- * 2 Shelf(400*510mm)
- * 1 Stainless steel basket



AG-20V-1

Surgical pendant

Standard Gas Outlets:2*Oxygen, 2*Vacuum, 2*Medical Air

Optional :1. colors and shapes for distinction

2. Using cycle for more than 20,000 times
3. Using second sealing technology with 3 status(open, stop, pull), can be maintained with gas.

Electrical sockets:12pcs 220V, 10A

Grounding terminal:4pcs 220V, 10A

Network interface: 1pc RJ45

Injection Pump:Psle 2 sets

Infusion Pump:Psle 2 sets

Drawer:1 pc



AG-HFP-E+E

Surgical pendant

- * Lighting*2
- * Dry area:Ceiling box*1,O2x2,VAC*1,AIR*1
- * Electrical socket *6 (220V)
- * Shelf*2, medical gas outlets*4
- * Wet Area:Column (L=700mm) * 1, O2*2、VAC*1、AIR*1
- * Electrical socket *6 (220V)
- * Shelf*1, Extension Arm*1, Suction rack*1



AG-FS008
Two Layers Step Stool



AG-NS004
Hospital Patient Stool



AG-NS006
SS Doctor Stool



AG-FS003
SS Step Stool



AG-NS001
Medical Stool



AG-NS005
SS Doctor Stool



AG-NS007
SS Stool



AG-NS008
SS Stool



AG-NS005B
Doctor Stool



DTL-ZY-08
Doctor Stool



DTL-ZY-10
Doctor Stool



FSXS-1311
Doctor Stool



AG-SS006-1
SS Instrument Trolley



AG-SS007
Fan-Shaped Operation
Apparatus Table



AG-SS020
SS Instrument Trolley



AG-SS010
SS Linen Trolley



AG-SS013
Trolley for Dirty Clothes



AG-SS019B
SS Linen Trolley



AG-SS063
Hand Soaking Drum with Trestle



AG-SS081
Trolley for dirty clothes



AG-SS084
Double Basin Trestle



AG-SS026
Dressing Delivery Cart



AG-SS027
SS Patient Record Trolley



AG-SS033
Infusion Treatment Cart



AG-SS021A
Thermos Cart for 24 Bottles



AG-SS024
Dressing and Medicine
Change Cart



AG-SS025
SS Laundry Trolley



AG-SS040A-1
Treatment Trolley



AG-SS040B
Treatment Trolley



AG-SS040C
Treatment Trolley



AG-SS042B-1
Treatment Trolley



AG-SS042D
Treatment Trolley



AG-SS053B
Treatment Trolley



AG-SS054
Trolley for Infusion Bottles



AG-SS057
Medicine Dispensing Cart



AG-SS060
Cart for Making Up
Bed and Nursing



AG-SS066
Oxygen Bottle Cart



AG-SS077
Hair Washing Cart



AG-SS082
Diaper Trolley



AG-SS092
Hospital Stainless Steel
Linen Trolley



AG-SS080-1
SS Operation Apparatus



AG-ET022
Emergency Treatment Cart



AG-SS032
Trolley with Flat Plate



AG-SS065
Single Basin Trestle



AG-SS073-1
Sterilizing Net Basket



AG-SS076
Fumigating Cabinet



AG-KB001
Kick Bucket



AG-SS029
Tray Stand with Two Posts



AG-SS008
Mayo Table



AG-SS008C
Mayo Table



AG-SS059
Lead rack for Garments



AG-SS088
SS Goods Rack



AG-SS070
Shelves for Storing Baskets



AG-SS001-1
SS Cloth Cabinet



AG-SS003-2
SS Instrument Cabinet



AG-SS005-2
SS Instrument Locker



AG-SS039-1
Instrument Locker



AG-SS091-2
SS Treatment Cabinet



AG-SS075
Urine Pouring Sink



AG-SS078
Upright Pole



AG-SS034
Treatment Trolley



AG-SS035A
SS Food Trolley



AG-SS035D
SS Food Trolley



AG-DB002
Dust Bin



AG-WAS008
Water Sinks



AG-WAS002
SS Water Sinks



AG-WAS001
Stainless Steel Water
Sinks for Cleaning



AG-WAS003
Stainless Steel Water
Sinks for Cleaning



AG-WAS005
Stainless Steel Water
Sinks for Cleaning



AG-MK002
SS Worktable



AG-MK005
SS Worktable



AG-MK001
SS Worktable



SJR-300D

Electrosurgical Generator

1. Rated output power: Error range is not more than $\pm 20\%$.
2. Modulation frequency: Error range should not exceed $\pm 10\%$.
3. Rated output voltage:
The output voltage of each output mode of the product should not be greater than the rated output voltage in the table below.
4. Crest factor: Error range is not more than $\pm 20\%$.
5. Frequency: Error range should not exceed $\pm 10\%$.



DGD-300B-2

Standard Electrosurgical Generator

1. Pure Cut Max Power: 300W
2. Blend Cut Max Power: 200W
3. Burn Max Power: 100W
4. Coagulation Max : 120W
5. Bipolar Coagulation Max Power: 70W



SY-A

Operating Scissors



HZZD-YTZJ-B

Medical Electric Drill



AG-C101A04

LDR Bed

Bed dimension including bed end and bumper wheel: Length2350 Width980mm

Bed dimension: Length1990mm Width870mm

Bed height: Lowest ≤ 490 mm Highest ≥ 890 mm (exclude the cushion)

Back section turning: $\geq 65^\circ$

Seat section turning: $\geq 15^\circ$

Trendelenburg: $\geq 8^\circ$

Leg section lifting distance:170mm

Footrest swing out: $\geq 90^\circ$

Footrest folding: $\geq 90^\circ$

Guard rail up/down movement:405mm

Castor diameter:150mm



AG-C501

LDR Bed

Maximum range of bed surface adjustment Fold on back panel: $\geq 50^\circ$

Seat folding: $\geq 12^\circ$

Folding on foot plate: $\geq 40^\circ$

Foot abduction: $\geq 90^\circ$

Lean in front of the bed: $\geq 1^\circ$

Back tilt of bed surface: $\geq 12^\circ$

Auxiliary table lifting: $\geq 120\text{mm}$

Safe working load: 135kg



AG-C500

LDR Bed

Back Section Raised from the horizontal : $\geq 60^\circ$

Leg section opened : $\geq 90^\circ$

Reversed Trendelenburg : $\geq 2^\circ$

Trendelenburg : $\geq 12^\circ$

Safe Working Load : $\geq 150\text{kg}$



AG-C310

LDR Bed

Dimension 205*98cm

Height 58-95cm

Table top width 88cm

Back section up 0-70°

Trendelenburg 0-12°

Reverse trendelenburg 0-5°



AG-C101A01

LDR Bed

Min. & Max. table height: 620mm~860mm
(exclude the cushion)

Back section turning: $\geq 60^\circ$

Trendelenburg and reversed trendelenburg:
reverse trend $\geq 5^\circ$ trend $\geq 8^\circ$

Seat section turning: $-12^\circ \sim 32^\circ$

Foot rest swing out: $\geq 45^\circ$

Foot rest folding: $\geq 45^\circ$

Handrail up/down movement: 360mm

Castor diameter: 150mm



AG-C101A03

LDR Bed

Min. & Max. table height: 580mm~860mm
(exclude the cushion)

Back section turning: $\geq 60^\circ$

Seat section turning: $\geq 10^\circ$

Trendelenburg: $\geq 8^\circ$

Leg section up/down movement: 100mm

Footrest swing out: $\geq 45^\circ$

Footrest folding: $\geq 45^\circ$



AG-C101A02B

Manual LDR Bed

Min. & Max. table height: 580mm~950mm
(exclude the cushion)

Back section turning: $\geq 70^\circ$

reverse trend $\geq 5^\circ$ trend $\geq 12^\circ$

Leg section telescope: 550mm

Castor Diameter: 125mm



AG-S108

Gynecology exam Chair

Bed size(without handrails) length 1400*width 720*height 880mm

Backrest upward angle 0-70°

Foot-stool size 500mm in length, 220mm in height

Foot-stool stroke 450mm

Auxiliary table stroke 420mm

Pedal stroke 305mm

Foot pedal swing angle 15°, 30°, 45°

Maximum loading capacity 240kg



AG-S105C

Medical Electric Gynecological Examination Table

Min. & Max. table height: 420mm~1070mm

Trendelenburg: $\geq 30^\circ$

Anit-trendelenburg: $\leq 30^\circ$

Footrest slide distance: 100mm

Auxiliary table slide distance: 360mm



AG-C307

Medical Gynecology Examination Table

Length 1800 \pm 50mm

Width 500 \pm 30mm

Height 750 \pm 40mm

Back rest 0°~60°+5°

Leg rest 0°~70°+5°



AG-S106

Medical Electric Gynecology Examination Chair

Back section upward $\geq 70^\circ$

Back section downward $\geq 20^\circ$

Seat section upward $\geq 40^\circ$

Seat section downward $\geq 0^\circ$

AG-C309**Electric Obstetric Table**

Length:2000mm

Width:600mm

Height : 550mm

Adjustment:≥400mm

Back section raised from the horizontal:≥70°

Back section lowered from the horizontal:≥10°

Seat section raised from the horizontal : ≥28°

Seat section lowered from the horizontal:≥10°

**PLGYN-01****Obstetric Bed**

Length/Width/Height 1900mm/600mm/750mm

Back Section Up/ Down ≥45°/≥10°

Seat Section Up/Down ≥25°/≥8°

Leg Section Up/Down ≥25°/≥25°





AG-IIR003

Infant Incubator

Microprocessor Microprocessor based servo controlled temperature system
 Display: Air temperature, skin temperature, humidity, timer and heat power separately displayed by LED
 Alarms functions : Power failure; over temperature; temperature deviation; temperature sensor failure; fan failure
 Alarms: Silence/reset button
 Timer: Integral timer to record therapy time
 Humidity: Adjustable continuously
 Temperature Setting : $>37^{\circ}\text{C}$, Heater is electrically cut-out if air temperature inside incubator exceed 40°C
 Keypad: A keypad lock prevent inadvertent changes the setting
 Storage: Trough for pulling and pushing, which is convenient to add water and wash; Big storage cabinet
 Fan : Fan with low noise and long life-span
 Temperature : Temperature deviation and over temperature could be amended in front panel directly
 A second thermal cut-off function for more safety
 Skin temperature sensor failure protect function avoid over temperature
 The infant bed inclination angle is adjustable
 Structure Six operating windows, two sides operating windows can be swiveled



AG-IIR001A

Infant Incubator

- Microprocessor based servo controlled temperature system
- Control mode: Air mode
- Humidity is adjustable in two grades
- Set temperature, air temperature, heating power are displayed separately by LED
- Self - testing function, various failure alarms by audible and visual
- >37 temperature set function
- Triple protection for over temperature with separate cut off device, more safety system
- The inclination of infant bed is adjustable
- Single wall hood, 4 operating windows and 2 iris ports
- RS232 connector
- Bracket with stand



AR-IRW003

Infant Warmer

- Microprocessor based servo controlled temperature system
- Three modes of control: Pre-warm, manual and automatic
- Set temperature and central skin temperature, peripheral temperature, air temperature, APGAR timer, heating power display separately
- 8" LCD colorful touch screen
- Carbon steel heater for more effectivity
- Special design Inclined heater head is more convenience for X ray test
- Digital skin temperature sensor, the data is accurate and stable
- Alloyed bracket, fastness
- Alarms functions for safety includes power failure, temperature deviation, temperature sensor failure, over temperature
- Integral timer to record therapy time
- Bigger mattress,
- Skin temperature trend for 5min
- Electric infant bed tilt angle is $\pm 12^\circ$
- Transparent protector folded down, with two infusion seals
- Convenient X-ray cassette tray under infant bed
- Electric height adjusted suit for operation
- With observe light, oxygen supply system and LED phototherap



AG-IRW002B

Infant Warmer

- Microprocessor based servo controlled temperature system
- Three modes: pre-warm, manual and automatic
- Set temperature and skin temperature display separately
- Anti-explosion micro crystal quartz for radiation source
- Self - testing function, various failure alarms by audible and visual
- Transparent protector can be folded down, with two infusion seals
- RS232 connector
- APGAR timer to record therapy time
- Convenient X-ray cassette tray under infant mattress
- Heater head can be adjusted $\pm 90^\circ$ horizontally
- Inclination of infant bed is adjustable



AG-50LED

Phototherapy

- LED bulbs as phototherapy radiant source
- Button control switch
- Equal light distribution. High intensity
- Quiet, no noise of fan
- The angle of head and height are adjustable
- Steel support pole, Lockable wheels
- Timer for total using time and each treatment time
- Count down timer
- Long life span

**AG-CB002**

One Function Manual Hospital
Children Bed

Size:1850*750*500mm

Color:Green

**AG-CB004**

Steel Frame Cartoon Flat Hospital
Children Bed

Size:1210*690*600mm

Color:Pink

**AG-CB014**

304 Stainless Steel Hospital
Children Bed

Size:800*700*1600mm

Color:Stainless Steel

**AG-CB011**

Baby Cart

Size:850*500*765-935mm

Hi-low 765-935mm

Head upward angel: 0-12°

Height adjustment: 765-935mm

Color:Green, Blue ,Pink

**AG-CB010**

Baby Crib

Size:810*520*880mm

Head upward angel: 0-12°

Color:Green, Blue ,Pink or other

**AG-CB009**

Baby Cart

Size: 850*530*920mm

Trendelenburg :0-15

Anti trendelenburg:0-12

Height adjustment:780-980mm

Color:Green, Blue ,Pink or other

ULTRASOUND SYSTEM



DW-580

Laptop Ultrasound Diagnostic System

Size: 12.1 inches, LCD medical display
 Probe interface: Standard 1, 2 (optional),
 Automatic identification function,
 support multiple probe work.
 Battery: lithium battery, 3-4 hours extra long standby time



AG-BU009

Laptop Ultrasound Machine

Size: 15 inches color LED screen
 Probe connector: 2
 Maximum Scanning Depth Max. 250mm
 Multi-frequency 5 segment frequencies
 Work time by built-in battery, about 5 hours



DW-P6

Specialized In Obstetrics & Gynecology (3D/4D)

Size: 15 inches, high definition LED
 Main function: 4D color
 Ultrasonic host operating system: Windows 8 operating system
 1. Spectrum pulse Doppler
 2. Direction energy Doppler
 3. Real time three synchronization



DW-T8

V4.0 High End Cardiac & Real Time 4D Color Dopple

Size: 21.5 inches, LED
 Main function: 4D color,
 Trolley type all digital color Doppler ultrasonic mainframe
 Probes: Convex probe, Tran-vaginal probe, Linear probe,
 Micro-convex probe, Cardiac probe, 4D Volume probe
 ☒ carotid artery intima measurement thickness (IMT)
 ☒ Automatic spectral envelope measurement



DW-VET6

DW-VET6 Handheld Full
 Digital Veterinary Ultrasound



DW-L3

DW-L3 Laptop Color Doppler
 Ultrasound Scanner



DW-370

Full-Digital Trolley B/W
 Ultrasound System



AG-T005L

Medical Line Array
 Wireless Probe

FM-CT755

32 FIT ECO-Green Intelligent CT

NDI (NanoDose Iterative)

1024x 1024 Megapixel

Intelligent position

Intelligent Scanning

Mobile Operation Panel

One-key Start

High Precision Bearing

Eco-Green Metal Tube

Energy-Saving

Thermal Airflow Isolation Design



SZBY-CT16

16 FIT CT Scan

One-click positioning

Two-click filming

Three-click scanning

Intelligent workflow throughout

Aegis ASG Detector System

High Performance Liquid Metal X-ray Tube

Optimal Beamline Design

Aegis ASG detector system

Optimized for ultra-low noise

The Integrated Casting of Stator and Rotor





AG-D112E

High Frequency Mobile C-arm System

1. Fully digital megapixel imaging system with high definition Integrated design Compact and lightweight
2. High-quality megapixel image enhancer for high-resolution image acquisition Extraordinary Smart
3. Integrated computer workstation & rack
4. C-arm host and workstation integrated design, no cable, easy to move. Small footprint, saving space
5. Integrated workstation with rich image processing capabilities
6. Humanized miniature. mobile operator panel design, free control from the host
7. Wide base design, more secure Five mechanical movements, free rotation without dead ends Human graphic operation interface
8. The integrated design of the whole machine is compact and beautiful *Human graphic LCD touch screen design, make it easy to operate
9. Intelligent parameter adjustment, more accurate
10. Rack monitor 360° rotation for free viewing in multiple directions



AG-CStar_S1

Mobile C-Arm X Ray Medical Imaging Machine

- 1 High-frequency inverter power supply and combined tube
- 2 Power: 5.6kW
- 3 Focus size: 0.6mm (small focus)/1.2mm (big focus)
- 4 Heat capacity of tube cover: 480kJ (648kHU)
- 5 Anode heat capacity: 60kJ (81kHU)
- 6 Inverter frequency: $\geq 200\text{kHz}$
- 7 The system has a color human body graphic LCD touch screen, real-time adjustment of exposure parameters
- 8 Tube voltage: 40-120kV
- 9 Dynamic plate detector type: Amorphous silicon CsI flat panel detector
- 10 Along the arc sliding $\geq 130^\circ$
Slip angle $\geq -35^\circ \sim +95^\circ$
Left and right swing $\geq \pm 15^\circ$
C-arm rotates around the horizontal axis $\geq \pm 180^\circ$
Pillar lift: electric, stroke $\geq 400\text{mm}$
The distance from the focus to screen: $\geq 1000\text{mm}$
C arm opening size: $\geq 780\text{mm}$
C arm arc depth: $\geq 740\text{mm}$
Horizontal extension: $\geq 200\text{mm}$



AG-D112B

High Frequency Mobile Digital C-arm System

- Configuration
- Main frame of C-arm 1
 - X-ray generator and high frequency inverted power supply 1
 - Toshiba 9" three fields image intensifier 1
 - Medical Mega-pixels digital CCD camera 1
 - Digital Acquisition and Processing workstation 1
 - 19" LCD monitor 1
 - 24" LCD monitor 1
 - Imported minigroove grid 1
 - Electric adjustable collimator 1
 - Hand controller 1
 - Red light cross localization 1



AG-D700A

High Frequency Mobile Digital C-arm System

- Configuration
- Main frame of C-arm (Four-dimensional electric) 1
 - X-ray generator and high frequency inverted power supply 1
 - Toshiba 9" image intensifier 1
 - Medical Mega-pixels digital CCD camera 1
 - CCU 1
 - Digital Acquisition and Processing workstation 1
 - 19" LCD monitor 2
 - Imported minigroove grid 1
 - Electric adjustable collimator 1
 - Human graphical LCD touch screen 2
 - Hand parameter controller 1
 - Hand Mechanical movement controller 2
 - Foot brake for exposure 2
 - Red light cross localization 1
 - Film hanger 1



AG-7300D

Medical Diagnostic X-ray System, Digital Radiography Equipment

Digital high frequency medical surgical X-Ray equipment can meet different parts radiography, such as head, chest, abdomen, waist, lumber, thoracic, pelvis, limbs etc. And meet different positions radiography, such as lay decubitus, normotopia, side position etc.

AG-8500C

High Frequency Digital Radiography System

- 1 Newly designed U-arm frame 1
- 2 High frequency and high voltage X-ray generator 1
- 3 China X-ray tube 1
- 4 China 17"×17" digital detector 1
- 5 Image processing workstation 1
- 6 24" High-definition LCD 1
- 7 Human graphical parameter setting program 1
- 8 High frequency inverter power supply electronic cabinet 1
- 9 Symmetry adjustable collimator with light 1





SZSN-DC

Mammography Machine

The machine we used for breast mammogram exam is called mammography machine. It is a device which houses the tube where x-rays are produced and pass through the breast, leaving electronic x-ray transfer to digital signals on a flat panel detector which produces the images. For film screen mammography, the images would be produced directly on breast film. The mammogram imaging would be revised by experienced doctors or physicians carefully.



KD-DYS-M

Dental X-ray Mobile Unit

1. Voltage: AC 220V $\pm 10\%$
2. Frequency: 50/60Hz
3. Electric Plug: Three-core (international/ European standard)
4. Ultimate Capacity: 900VA
5. Electric Current: 4A
6. Fuse: 6.3A
7. Focus: 0.8mm
8. Rated High-Voltage: 70KV $\pm 10\%$
9. Tube-Head Current: 7mA $\pm 15\%$
10. Anode Angle: 19°
11. Load Cycle: 1/60
12. Half Value Layer: 70KV 1.6mmAl
13. Inherent Filtration ≥ 2.1 mmAl
14. Radiation Leakage: 1m < 0.07mGy/h



AG-Femaray

ME Digital Mammography X-Ray Imaging Systems

Amorphous silicon flat panel detector
 Pixel matrix : $\geq 3072 \times 4096$ pixels
 Vertical range: 650mm \sim 1300mm ($\pm 5\%$)
 Rotation angle: $-90^\circ \sim +90^\circ$ ($\pm 2^\circ$)
 Nominal power/Maximum power : 4.8kW/5kW
 Focus size : 0.1mm/0.3mm
 Focus power : small focus: ≥ 2 kW
 large focus: ≥ 8 kW



AG-1100

Animal Medical Diagnostic X-ray System

Standard configuration

X-ray tube	1 set
Mainbody VET1100	1 set
Workstation 24" computer	1 set
17" 17M FPD	1 set
Workstation software	1 set

MRD-01 4K

Ultra HD Fluorescence Imaging Laparoscope System



- 4K Image Processing Unit: Smart Eye101C(4K White Light + NIR)
- LED/NIR Source: LED White Light + ICG Excitation Light
- 4K Camera Head: Sony 4K UHD COMS, 8,570,000 Pixels
- 4K Laparoscope: 10mm, 0° or 30°, Autoclavable
- Monitor: 32" 4K medical grade, 16:9, 3840*2160

OM-822C

Hospital Laparoscopy System



- Image sensor 1/2.8 high sensitivity CMOS
- Resolution 1920(H)*1080(V) 60 frames
- White balance AWC (automatic white balance control) and manual control
- Bulb parameters 100W LED light
- Color temperature 6500K
- Illumination $\geq 1400,000\text{LX}$
- Display 24-inch LED display
- Input signal HDMI, DVI, VGA, CVBS, USB (3G/SDI optional)

MRD-02 4K

Ultra HD Fluorescence Imaging Laparoscope System



- 4K Image Processing Unit: Smart Eye101D(4K White Light)
- LED/NIR Source: LED White Light
- 4K Camera Head: Sony 4K UHD COMS, 8,570,000 Pixels
- 4K Laparoscope: 10mm, 0° or 30°, Autoclavable
- Monitor: 32" 4K medical grade, 16:9, 3840*2160

MRD-03

Ultra HD Fluorescence Imaging Laparoscope System



- NIR Camera Control Unit: Smart Eye101(White Light + NIR)
- LED/NIR Source: LED White Light + ICG Excitation Light
- Camera Head: 3,140,000 Pixels
- NIR Laparoscope: 10mm, 0° or 30°, Autoclavable
- Monitor: 27" medical grade, 16:9, 1920*1080



EMV-200

Video Gastroscope

- View of field 140°
- Diameter of distal-end Ø9.8mm / 9.2mm
- Depth of field 3-100mm
- Range of bending UP210°;Down90°;L/R100°
- Working length 1035mm
- Resolution 440,000 Pixels
- Screen display Full screen
- configuration EMV-200 ,
- EMV-3000 image prcesser,
- LG-400 light source
- 15" LCD monitor
- Trolley



EMV-400

Video Colonoscope

- View of field 140°
- Diameter of distal-end Ø12.0mm
- Diameter of clamp aperture Ø 3.2mm /3.7mm
- Depth of field 3-100mm
- Range of bending UP180°;Down180°;L/R160°
- Working length 1680mm
- Resolution 440,000 Pixels
- Screen display Full screen
- configuration EMV-400 ,
- EMV-3000 image prcesser,
- LG-400 light source
- 15" LCD monitor
- Trolley



XZLC-001

Colposcope

- Viewing angle: 45° oblique
- Eyepiece magnification: 16X
- IPD range: 50mm-80mm
- Diopter adjustment ± 5D
- Objective lens focal length: F = 300mm
- Zoom system: 0.4X, 0.66X, 1X, 1.5X, 2.5X five times zoom
- Total magnification: 2.7X, 4.4X, 6.6X, 10X, 16.6X
- Line view: 90mm, 55mm, 37mm, 24mm, 15mm
- Trimming distance: 60mm
- Lighting system: 10W LED lights coaxial lighting, brightnessadjustable, illumination> 30000LX
- Filter: Built-in green and blue filters
- Bracket: clawed disc upright bracket, with casters, easy to move, highly adjustable, disc built-in circuit board
- With a beam splitter, camera connector, can be connected to 1/3 inch C interface camera
- Input power: AC100V-240V
- Optional: Teaching mirror, camera, SLR camera connector, monitor, Large objective lens (F=230mm and F=280mm)



XZLC-002

Digital Electronic Colposcope

- Camera 1/2.8" sony CMOS
- Total pixels ≥8,000,000 pixels
- Scanning system Interlaced scanning
- Image size 1920*1080
- Frame (1920*1080)30p(1920*1080)25p
- Horizon resolution ≥950 lines
- SNR ≥50dB
- Focus (zoom ratio) f=4.7(wide end)~f=94mm(far end)
- Focusing way Automatic or manual
- Object distance 300mm-500mm
- Magnification times Optic 25 times, digital 12 times
- Signal output SDI
- White balance Automatic white balance or manual
- LED light source illumination ≥1200Lux



XZLC-003

Digital Electronic Colposcope

- Standard Configuration: Luxury medical cart x1
- 2,000,000 pixels Sony CCD camera set x1
- Camera bracketx1
- Handle control x1
- Videolinx1
- English colposcope software x1
- Power line x1
- Computer(2G memory,500G hard disk.22inchscreen)*1
- Keyboard x1 Mouse x1



OM-6650-1

Colposcope Colposcopy Digital Imaging Processing System

- [Total Pixels] 3270000 pixels
- [Imager] 1/2.8 Sony CMOS
- [Frame Rate](1920*1080) 25p
- [SNR]≥50dB
- Video signal
- [Horizontal Resolution]≥ 1080 TVL
- [Light source intensity]≥ 1200lux
- [Field of vision]:2.5mm-20mm-320mm

PD01**Protective Clothing**

SIZE LENGTH WIDTH APPLICABLE BODY

S 85cm 55cm 150-160cm

M 90cm 55cm 165-170cm

L 100cm 60cm 170-180cm

XL 110cm 60cm 180-185cm

Protective performance parameter:

LEAD EQUIVALENT 0.25mmPb 0.35mmPb 0.5mmPb

SHIELD EFFECTIVEESS 96% 97.5% 98.5%

PD04**Protective Clothing**

SIZE LENGTH WIDTH APPLICABLE BODY

S 85cm 55cm 150-160cm

M 90cm 55cm 165-170cm

L 100cm 60cm 170-180cm

XL 110cm 60cm 180-185cm

Protective performance parameter

LEAD EQUIVALENT 0.25mmPb 0.35mmPb 0.5mmPb

SHIELD EFFECTIVEESS 96% 97.5% 98.5%

PD05**Protective Clothing**

SIZE LENGTH WIDTH APPLICABLE BODY

S 85cm 55cm 150-160cm

M 90cm 55cm 165-170cm

L 100cm 60cm 170-180cm

XL 110cm 60cm 180-185cm

Protective performance parameter:

LEAD EQUIVALENT 0.25mmPb 0.35mmPb 0.5mmPb

SHIELD EFFECTIVEESS 96% 97.5% 98.5%

PD06**Protective Clothing**

SIZE LENGTH WIDTH APPLICABLE BODY

S 85cm 55cm 150-160cm

M 90cm 55cm 165-170cm

L 100cm 60cm 170-180cm

XL 110cm 60cm 180-185cm

Protective performance parameter:

LEAD EQUIVALENT 0.25mmPb 0.35mmPb 0.5mmPb

SHIELD EFFECTIVEESS 96% 97.5% 98.5%

**BP-3003****Protective Glass**

Material : Nylon frame + PC anti-fog lens

Product Size : 14.7cm (L) * 5.3cm (H)

**BP-3009****Protective Glass**

Material:PC frame+PC Anti-fog Lens

Product Size:16cm(Length)*5.8cm(Height)

**BP-3058-2****Protective Glass**

Material:Silicone frame+PC Anti-fog Lens

Product Size:14.7cm(Length)*9cm(Height)

**BP-3058-4****Protective Glass**

Material:PVC frame+PC Anti-fog Lens

Product Size:14.5cm(Length)*8.5cm(Height)

**PG01-1****LEAD SCREEN
(SINGLE PANEL)**

Material #304 stainless steel or iron with electrostatic spraying. The size be customized according to your requirements.

**PG02****LEAD SCREEN**

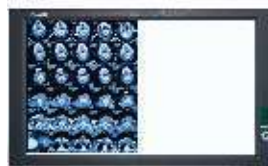
WIDTH 665MM
HEIGHT 750MM

**PG05-1****FILMS-STORING CABINET**

LENGTH 860MM
WIDTH 570MM
HEIGHT 880MM

**AG-KL001****LED X Ray Medical Film Lamp**

Size: External dimensions(mm):820x520mm
Film-viewing area(mm):720x440mm
Color temperature: 9000±300K
Service life: 80,000 hours
Average brightness: 300 cd/m²-4000 cd/m²
Average illuminance: 900 lux-13,000 lux
Brightness uniformity coefficient of viewing screen: ≥90%

**ZG-2****Super Bright LED Dual View Film Viewer**

Outside frame 840*502*38mm
Reading size 720*422mm
Input voltage AC90-240V
Power per unit ≤30W
super bright LEDs 572

**ZG-3B****Ultra-Thin LED Triple View Film Viewer**

Outside frame 1200*505*25mm
Reading size 1080*425mm
Input voltage AC90-240V
Power per unit ≤30W
super bright LEDs 144

**OM-2710****Medical Monitor**

Screen (HxV) 601.9mm×304.4mm
Dimension (HxV) 650mm×356mm
Pitch 0.3114mm×0.3114mm
Resolution 1920×1080
Contrast 1500:1
Brightness 400cd/m²

**LC-MS19001****19Inch Grayscale Monitor**

Display Size 376.32(W)X301.06(H)mm
Resolution 1280x1024
Dot Pitch 0.294(H)x0.294(V)mm
Response Time 14ms
Brightness 1000cd/m²
Contrast 900:1
Color 4096 Grayscale

**LC-MS27002****27" 4M Colorful Monitor**

Display Size 596.74(W)X335.66(H)mm
Resolution 2560x1440
Dot Pitch 0.2331(H)x0.2331(V)mm
Response Time 12ms
Brightness 350cd/m²
Contrast 1000:1



AG-MRI1.5

The 4 Generation of Superconductive MRI System

- 1.Short bore magnet with zero liquid helium "0" boil-off technology;
- 2.Powerful and high linearity gradient system;
- 3.High efficiencyRF system combined with Dual-engine parallel acquisition technology;
- 4.Multi-channel phased array receiving coil with intelligent identification ;
- 5.Soft sound technology decreases the noise of scanning;
- 6.Complete clinical application package to meet all your clinical needs



XC-310

4 Blood Bank Refrigerator



YC-200 REFRIGERATOR

2~8 Pharmacy



YCD-265

Pharmacy Refrigerator with freezer



YR/FL800

2~8 Medical Refrigerator



DW-25L116

-25°C Deep Freezer



YR-33L

Cold Storage Box



LTT-600
Water Bath (3 Usage)



LYZ-103B
Shaking Incubator



LYZ-1102
Shaking Incubator
(Double door)



LI-420
Heating Incubator



WJ-2
CO2 Incubator



LDS-275Y-N
Medicine Stability



LBI-200
Cooling Incubator



LAC-1075-N
Climate Chamber



LTH-175-N
Constant Temperature
& Humidity Chamber

**XSP-02**

Biological Microscope

**XSP-102V**

Biological Microscope

**XSP-100E**

Biological Microscope

**XSP-100SM**

Biological Microscope

**ST-4024-2L**

Biological Microscope

1. Form a clear upright stereo image of the object
2. Show the true color difference of the object
3. 45°tilting, binocular observation head
4. Single vision adjustment range is ± 5 diopters
5. Interpupillary distance adjustment range: 55-75mm
6. The objective lens adopts shift design, there are 2X / 4X, 1X / 2X, 1X / 3X to choose from
7. Electric lighting system 230V or 115V, 12V / 10W incandescent lamp, 12V10W halogen lamp and high brightness LED

ZJXT-X-6A

Medical Operating Microscope

1. Fit for neurosurgery, spinal surgery, vascular, plastic and reconstructive surgeries.
2. Can be used by 2 doctors at the same time.
3. With integrated digital recording system, it is also fit for teaching.
4. Continuously zoom. Control by knob and foot panel or knobs.
The change of zoom is smooth.
5. Rapid focusing on small increases, the retarded focusing on great increases.
6. With 3 kinds of objectives, fit for different depth surgery.
7. Four groups of illumination. Control by knob and foot panel.
8. Turning of extension hand around the axis.
9. The support can keep balance at any place.
10. Automatic balancing of the microscope.
11. Multifunctional Control panel on the support.





D2012plus

High Speed Mini Centrifuge



D3024

High Speed Micro-Centrifuge



DM0408

Low Speed Centrifuge



AG-D0037

Low Speed Centrifuge

PATIENT MONITOR



AG-BZ014

Medical Multi-Parameter Patient Monitor

Size: 12.1 inches, color: white, main function:
detecting ECG/blood oxygen/pulse rate/body
temperature/blood pressure/heart rate/respiration



AG-BZ026

Multi-Parameter Patient Monitor

Size: 12.1 inches, color: white, main function:
detecting ECG/blood oxygen/pulse rate/body
temperature/blood pressure/heart rate/respiration



LCX-PM80B

Vital Signs Monitor

8 inch high resolution color TFT display
detecting ECG/blood oxygen/pulse rate/body
temperature/blood pressure/heart rate/respiration



KT-CMS5100

Patient Monitor

- 1) NIBP, SpO2&PR, and TEMP monitoring of adult, pediatric and neonate of all ages
- 2) Built-in rechargeable lithium polymer battery
- 3) 2.8" (320x240) true color TFT LCD screen



LCX-PM80D

Vital Signs Monitor

8 inch high resolution color TFT display
Adjustable audible and visual alarms Built-in
rechargeable lithium battery

FETAL MONITOR



AG-BZ011

Medical Series Fetal Monitor

Foldable 12.1 inches high-brightness LED display,
touch screen (optional)
Large capacity storage space,
8640 hours memory for fetal traces
Configurable audible and flashing fetal heart rate alarms
Support HL7 (Health Level Seven, optional)



AG-BZ012

Medical Series Fetal Monitor

Folded 10.4 inches high-brightness screen TFT LED,
touch screen (optional)
12-crystal pulse doppler transducer (waterproof probes for option)
Large capacity storage space, 8640 hours memory for fetal traces



KT-CMS800G

Fetal Monitor

Color LCD, 60° convertible screen
Area mark for normal FHR(120 BPM~160 BPM)
Alarm for abnormal FHR
Optional twins monitoring
9-crystal and broad beam transducer



BF-600+

Fetal Doppler

LED display the FHR
Built-in high-capacity rechargeable battery, can last over 8 hours
Single unit Size: 38*28*20cm



AG-AM001

Operating Room Equipment Anesthesia Machine

- 1.Power Supply: 100-240V
- 2.Gas Source: O₂,N₂O
- 3.Ventilation Mode: IPPV, A/C, SIMV, SIGN, MANUAL
- 4.Monitor Parameters: Freq, Vt, MV, Paw
- 5.Graphical Display: P-T
- 6.Vaporizer:Halothane, Enflurane, Isoflurane, Sevoflurane



AG-AM003

Anesthesia Machine

- 1.Gas source:O₂,N₂O,AIR
- 2.Pressure:280kPa-600kPa
- 3.Voltage:100-240V
- 4.Power frequency:50/60Hz
- 5.Input power:80VA
- 6.Vaporizer : Halothane, Enflurane, Isoflurane, Sevoflurane



AG-AM005

Anesthesia Machine

- 1.Gas source : O₂,N₂O,AIR
- 2.Pressure : 280kPa-600kPa
- 3.Voltage : 100-240V
- 4.Power frequency : 50/60Hz
- 5.Input power : 80VA
- 6.Vaporizer : Halothane, Enflurane, Isoflurane, Sevoflurane



AG-DM6B

Veterinary Anesthesia Machine

- 1.Gas source:O₂
- 2.Pressure:280kPa-600kPa
- 3.Voltage:100-240V
- 4.Power frequency:50/60Hz



AG-DM6C

Veterinary Anesthesia Machine

- 1.Flowmeter:O₂ (0~5L/min)
- 2.Rapid oxygen supply:25L/min~75L/min
- 3.Airway pressure:0cmH₂O~100cmH₂O
- 4.Gas source:O₂
- 5.Pressure : 280kPa~600kPa



AG-DM6A

Veterinary Anesthesia Machine

- 1.Gas source:O₂, N₂O
- 2.Pressure:280kPa-600kPa
- 3.Voltage:100-240V
- 4.Power frequency:50/60Hz



510S

Emergency Transport Ventilator (Without Cylinder)

1. Pressure Value: Ppeak, PEEP
2. Volume / Flow Value: Vt, MV
3. Time Value: ftotal
4. Real Time Curves: Pressure-Time, Flow-time



DS-6

Auto CPAP Ventilator

1. Work Mode: CPAP, Auto
2. Sound: ≤ 28 dB
3. Screen: 2.8 inch TFT, 320x240
4. Pressure Range: 4-20 cm H₂O, auto adjustment
5. Power Supply: Input 100-240V, 50-60Hz, 1-2A; Output +24V, 2.5A
6. DC Voltage: 24VDC, 2.5A



AG-HXJ03

Medical Ventilator

1. Gas source: O₂, Air
2. Pressure: 280kPa - 600kPa
3. Voltage: $\pm 220V \pm 22V$
4. Power frequency: 50Hz ± 1 Hz
5. Input power: 900VA (with air compressor)
250VA (without air compressor)
6. Ventilation mode: IPPV, A/C, PCV, SIMV, SPONT/CPAP, PSV, SIGH, MANUAL



AG-HXJ200A

CPAP System Medical Ventilator

1. Gas source: O₂, Air
2. Pressure: 280kPa - 600kPa
3. Voltage: 100 - 240V
4. Power frequency: 50Hz ± 1 Hz



AG-HXJ200D

CPAP System Medical Ventilator

1. Oxygen concentration : Adjusting range: 21% - 100%
2. CPAP : Adjusting range: 0cmH₂O - 10cmH₂O
3. Continuous flow : Adjusting range: 1.5L/min - 15L/min
4. Gas source : O₂, Air
5. Pressure : 280kPa - 600kPa



V6

ICU Ventilator Crius

1. Input voltage: 110 to 240V $\pm 10\%$, 50 / 60 Hz AC or 24VDC $\pm 10\%$
2. Power consumption: 50W typical
3. Protection class: Class I
4. Backup battery: 2 batteries (5200mAh each) / hot swappable
5. Oxygen supply: 280 to 600 kPa (41 to 87 psi), 120 L / min
6. Low pressure: Oxygen ≤ 15 L / min, max. 600 hPa for low pressure



VG70

Optimal Combination of Invasive and Noninvasive Ventilator

1. Screen: 12" TFT color touch screen (detachable)
2. Supply Gas: O₂, 0.28-0.6 MPa
3. Power Supply: AC 100-240 V, 50 Hz/60 Hz
4. Communication Interface: RS-232 Port, Nurse call Port, Ethernet Port
5. Ventilation Modes
VCV(A/C) PCV(A/C) PRVC SIMV(VCV)+PSV
SIMV(PCV)+PSV SIMV(PRVC)+PSV SPONT/CPAP+PSV
BIVENT+PSV NIV/CPAP NIV-T NIV-S/T

**FDK-121****Mesh Nebulizer**

1. Microporous direct atomization technology, tiny particles (3-5 microns)
2. Ultra-quiet, low power consumption, built-in lithium battery
3. Almost without residual liquid
4. Mini design, easy to carry
5. Two modes of automatic turn off by 5 or 10 minutes

**FDK-125****Mesh Nebulizer**

1. Microporous direct atomization technology, tiny particles (3-5 microns)
2. Ultra-quiet, low power consumption, built-in lithium battery
3. Almost without residual liquid
4. Mini design, easy to carry
5. Two modes of automatic turn off by 5 or 10 minutes

**FDK-520A****Ultrasonic Nebulizer**

1. Elegant and portable design.
2. Cure some asthma, chronic obstructive pulmonary disease (COPD) through aerosolization.
3. Two air flow control.
4. Suitable for all kind of people with various age.
5. Standard: color box, 2 mouth pieces, 1 adult and 1 child mask, Extension tube, 5 reusable medication cups, AC adapter.

**FDK-580****Ultrasonic Nebulizer**

1. Elegant and portable design.
2. Cure some asthma, chronic obstructive pulmonary disease (COPD) through aerosolization.
3. Two air flow control.
4. Suitable for all kind of people with various age.
5. Standard: color box, 2 mouth pieces, 1 adult and 1 child mask, Extension tube, 5 reusable medication cups, AC adapter

**FDK-CNB69006****Compressor Nebulizer**

1. Liter Flow Range: > 6.7lpm
2. Maximum nebulization rate $\geq 0.25\text{mL/min}$
3. Sound level: $\leq 65\text{dB(A)}$
4. Particle size: $0.5\text{-}10\mu\text{m}$
5. MMAD $\leq 5\mu\text{m}$
6. Operation Pressure Range: $9.5\text{-}19\text{PSI}$
7. Compressor pressure range: $22\text{-}58\text{PSI}$

**FDK-CNB69007****Compressor Nebulizer**

1. Liter Flow Range: > 6.7lpm
2. Maximum nebulization rate $\geq 0.25\text{mL/min}$
3. Sound level: $\leq 65\text{dB(A)}$
4. Particle size: $0.5\text{-}10\mu\text{m}$
5. MMAD $\leq 5\mu\text{m}$
6. Operation Pressure Range: $9.5\text{-}19\text{PSI}$
7. Compressor pressure range: $22\text{-}58\text{PSI}$

**FDK-CNB69009****Compressor Nebulizer**

1. Liter Flow Range: > 6.7lpm
2. Maximum nebulization rate $\geq 0.25\text{mL/min}$
3. Sound level: $\leq 65\text{dB(A)}$
4. Particle size: $0.5\text{-}10\mu\text{m}$
5. MMAD $\leq 5\mu\text{m}$
6. Operation Pressure Range: $9.5\text{-}19\text{PSI}$
7. Compressor pressure range: $22\text{-}58\text{PSI}$

**FDK-CNB69010****Compressor Nebulizer**

1. Liter Flow Range: > 6.7lpm
2. Maximum nebulization rate $\geq 0.25\text{mL/min}$
3. Sound level: $\leq 65\text{dB(A)}$
4. Particle size: $0.5\text{-}10\mu\text{m}$
5. MMAD $\leq 5\mu\text{m}$
6. Operation Pressure Range: $9.5\text{-}19\text{PSI}$
7. Compressor pressure range: $22\text{-}58\text{PSI}$

**FDK-CNB69012****Compressor Nebulizer**

1. Liter Flow Range: > 6.7lpm
2. Maximum nebulization rate $\geq 0.25\text{mL/min}$
3. Sound level: $\leq 65\text{dB(A)}$
4. Particle size: $0.5\text{-}10\mu\text{m}$
5. MMAD $\leq 5\mu\text{m}$
6. Operation Pressure Range: $9.5\text{-}19\text{PSI}$
7. Compressor pressure range: $22\text{-}58\text{PSI}$

**FDK-CNB69021****Compressor Nebulizer**

1. Liter Flow Range: > 6.7lpm
2. Maximum nebulization rate $\geq 0.25\text{mL/min}$
3. Sound level: $\leq 65\text{dB(A)}$
4. Particle size: $0.5\text{-}10\mu\text{m}$
5. MMAD $\leq 5\mu\text{m}$
6. Operation Pressure Range: $9.5\text{-}19\text{PSI}$
7. Compressor pressure range: $22\text{-}58\text{PSI}$

**KT-NEJ01****Compressor Nebulizer**

- Small in particle size, easy to absorb.
 Moderate in nebulization rate, which reduces medication waste.
 Long in air tubing, convenient and flexible to use.
 Low in medication residue, high in nebulization rate, less in medication waste.
 Compact and lightweight design, convenient to carry.
 Low in noise, which reduces interference to environments.
 Built-in oil-free compressed vacuum pump, safe and durable to use.



AG-D25AM

93% Oxygen Purity Oxygenator
Suppliers and Manufacturers

- 1.Oxygen flow 0.5-5 LPM
- 2.Oxygen purity 93%±3%
- 3.Power consumption <320 W
- 4.Output pressure 0.05-0.07Mpa
- 5.Operation noise(dB) <45dB (A)
- 6.Operating temp 5°C--40°C



JAY-5BW

Oxygenator

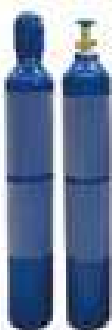
- 1.Flow Rate : 0-5LPM
- 2.Purity : 93% (±3%)
- 3.Outlet Pressure : 0.04-0.07Mpa
- 4.Sound Level : ≤43dB
- 5.Power Consumption : ≤400W
- 6.LCD Display : Switch times,operating pressure, present working time,accumulated working time, presetting time from 10mins to 40hours
- 7.Alarm : Power failure alarm,High&low pressure alarm



JAY-40

Oxygenator

- 1.Oxygen flow (L/min) : 0-40
- 2.Outlet Pressure (Mpa):0.04-0.07
- 3.Oxygen concentration:93% (±3%)
- 4.Noise level (dB):≤60
- 5.Power:AC220V/110V (±10%), 50/60Hz (±1Hz)
- 6.Power Consumption:≤2200W
- 7.LCD display: Starting times, operating pressure, present working time, accumulated working time, preset time from 10mins to 40hours
- 8.Alarm:Power failure alarm, high/low pressure alarm



YF-30L

Oxygen Tank



HF-05H

Wall Fixed Type Oxygen
Flowmeter with Humidifier



HZZD-YTQ-B

Automatic Tourniquet
System



HZZD-YTQ-E

Automatic Tourniquet
System



HZZD-YTQ-F

Automatic Tourniquet
System



WZYH-403-1

Tourniquet



AET-1F1

Infrared
Thermometer



DMN-K3

Thermometer



LCX-F04

Infrared
Thermometer



MDW-208

Forehead
Thermometer



DYHL-012

Desktop
Sphygmomanometer



KT-CMS50DL

Pulse Oximeter



KT-08A

Electronic
Sphygmomanometer



KT-CMS50E

Pulse Oximeter



KT-CMS60D-VET

Pulse Oximeter



KT-CMS70A

Pulse Oximeter

ELECTROCARDIOGRAPH



AG-BZ009

Multifunction 12 Channel White ECG

Display: 1024*600 10inch color touchscreen display
 Multiple operation modes: Manual/Auto/Arrhythmia
 Analysis Modes
 Function:
 12 channel ECG machine with interpretation
 12-lead ECG simultaneous acquisition



AG-BZ010

Hospital Electrocardiograph 3 Channel ECG

4.3inch 480x272 color graphic LCD display
 Three channel ECG machine with interpretation
 12-lead simultaneous acquisition
 Multiple operation modes: Manual/Auto/Arrhythmia
 Analysis Modes



AG-BZ016

Hospital Multifunction 6 Channel White ECG

Display: 480*800 7inch touch-screen display
 Multiple operation modes:
 Manual/Auto/Arrhythmia Analysis Modes
 Function: Six channel ECG machine with interpretation
 12-lead ECG simultaneous acquisition
 6-channel recording with a rhythm lead



KT-TLC5000

Dynamic ECG Systems

Real-time store ECG data for 24-hour.
 Sync analysis for 12-lead
 Flexible atrial fibrillation analysis



KT-ECG90A

Electrocardiograph

Sync collection for 12-lead ECG
 Display of 3/6/12-lead ECG, print mode,
 sensitivity, paper speed and filter state

**XYQ-5****Tilting Table**

- 1.size: 2050*840*790mm.
- 2.Standing angle: 0°~90°.
- 3.Pedal Up & Down adjusting angle: -25°~25°

**EL03****Robin Electric Treatment Table**

- 1.Size: 195*66*(48-94)cm
- 2.One electric motor, standard supports "Timotion" brand for Hi-Lo function.
- 3.Adjustable head section featuring single gas strut, angle adjustable from -90° to +40°.
- 4.Adjustable backrest featuring double gas struts, angle adjustable from +0° to +90°.

**JYZ-III****multifunctional Traction Bed**

- 1.Traction distance: 0~200mm adjustable
- 2.Lumber traction: 0~990N adjustable
- 3.Traction time: 0~99min adjustable

**JYZ-IB****Multifunctional Traction Bed**

- 1.Lumber traction: 0~990N adjustable
- 2.Cervical traction: 0~200N
- 3.Cervical traction distance: 0~300mm
- 4.Waist heat therapy: less than 50
- 5.CE certified

**EL02W****Electric Bobath 2 Section Table**

1. "Timotion" brands motor for High-Low function.
2. Height control from 48cm to 94cm by footbar system.
3. Adjustable backrest featuring double gas strut, angle adjustable from -20 ° to + 80°.

**AG-ECC16****Electric Hi-Lo Tilt Table for Adult**

Two electric motors

**HSHD-001****Manual Traction Bed**

Neck 0~20kg, waist 0~80kg
Product Size 1900*560*510mm
Bearing weight 170kg

**YH-QY-02****Traction Chair**

- 1.Static load capacity of traction chair: 100 kg weight is placed on the chair board for 6 h, which is stable and free from shaking, and the whole traction chair shall not be deformed.
- 2.Product height:1820mm

**PD-EPL**

Electric Patient Lift
System

Size: 129*69*33cm

**JY-ZGQ-1**

Elbow Quadriceps 2-in-1
Training Chair

Size: 140 * 95 * 115cm

**JY-XBC**

Adult walker

Size: 70 * 60 * (110-132)cm

**JY-ZGQ**

Elbow Traction
Training Chair

Size: 135 * 100 * 115cm

**JY-JDC**

Rehabilitation Bed

Size: 205 * 65 * (51-89) cm

**JY-ZLC-03**

Standing Training Bed

Size: 202 * 81 * 108cm

**JYE-ZLC-A1**

Multifunctional Standing
Trainer for Children

Size: 145 * 65 * 105cm

**JY-JZB-4A**

Weight Loss Gait
Trainer

Size: 136 * 162 * 248cm

**JYE-ZLJ-5**

Children's Lower Limb
Training Stand

Size: 120 * 95 * 150cm

**JYE-PBQ**

Children Rehabilitation
Treadmill Outdoor Children
Home Fitness Training
Stepper

Size: 82 * 63 * 98cm

**KAS-16**

Stander (Children's Split
Leg Type)

**JYE-ZLJ-2**

Child Standing Trainer

Size: 80 * 65 * 123cm

**JY-PHG**

Balance Bar

Size: 326*(85-120)*(71-95)cm

**JYE-XFT-1**

Two-Way Training Escalator

Size: 290 * 71 * (110-137) cm



XY-DSXB-03A

Back Extension



XY-DSXZ-03A

Leg Curl



XY-DSXZ-02A

Abductor



XY-DSSZ-01A

Shoulder Press



XY-KGJ-2

Hip Joint Training Device



XY-ZBD-ID

Passive And Active Exerciser
For Upper Limb



YTK-E

Knee Traction CPM (for knee,
ankle and hip)



XY-K-M2

Gait Training Device With
Medical Treadmill



XY-14-8B

Multifunctional Trainer

- 1.Shoulder joint convolution training exerciser
- 2.Forearm rotation exerciser
- 3.Wrist extension&flexion exerciser
- 4.Shoulder ladder
- 5.Pulley ring exerciser
- 6.Traction net frame
- 7.Training table
- 8.Pulley weights



XY-101C

Hand Rehabilitation Training System

- b)Twelve training modes: horizontal pulling training, finger extension/flexion training, grasp training, finger extension training, finger symmetry training, finger holding training, forearm rotation training, finger pinching training, thumb strength training, wrist ulnar/radial deviation training, wrist extension/flexion training, finger lifting training
- b) Four independent screens enable four patients take training simultaneously
- c) Resistance adjustable: 500g-2500g
- d) Interactive games
- e) Customized training plan is available
- f) Evaluation report is automatic formed and printed.
- g) Size: 1500*1500*1140-1540mm; table height: 670-1070mm



KD-1

Balance Testing and Training System

- 1.Diagonal screen size: 21inch
- 2.CPU: Intel Pentium Dual Core E5800
- 3.CPU frequency: 3200MHz
- 4.Memory size:2GB DDR3
- 5.Capability of hard disk :500GB
- 6.Graphics chip: Intel X4500 HD
- 7.CD-ROM type:DVD-ROM
- 8.OS: Windows 7 Home Basic
- 9.Graphics type: integrated graphics
- 2,Software detailed parameters

**XY-1****Static Bike**

Range of cushion: 0-23cm
 Rated loading: 150Kg
 Damping device: 8
 Size: 90*45*106cm

**NTLHK-021****Trampoline**

Size: 44inch
 Height: 26cm(from the ground)

**NTLHK-101****Multi-Function Horizontal Bar**

Material:Steel tube + foam
 Bearing Capacity:150KG

**NTLHK-001****Yoga Ball**

Diameter:65cm
 Material:PVC
 Standard:with air pump&air lock

**NTLHK-003****Half-Round Balance Ball**

Diameter:60cm
 Material:PVC+ABS

**NTLHK-006****Massage Ball**

Diameter:7cm
 Material:PVC

**NTLHK-016****Yoga Mat**

Size:173*61cm
 Material:PVC

**NTLHK-054****Sandbags**

5kg, 10kg, 15kg, 20kg

**NTLHK-062****Exercise Bag**

5kg, 8kg, 10kg, 12kg, 15kg, 20kg, 25kg

**NTLHK-027****Dumbbell**

0.5kg, 1kg, 2kg, 2.5kg, 4kg, 5kg

**NTLHK-033****Exercise Ball**

1kg, 2kg, 3kg, 4kg, 5kg, 6kg, 7kg,
 8kg, 9kg, 10kg

**NTLHK-097****Push-up Stand**

Size: Diameter 20cm
 Thickness 2.5cm

**AG-908LJ****Aluminium Alloy Wheelchair**

- 1.Alluminum alloy frame;
- 2.Flip-up desk armrest;
- 3.Detachable footrest

**AG-863LAJPF4****Aluminium Alloy Wheelchair**

- 1.Alluminum alloy light weight chair frame;
- 2.Drop-back handle;
- 3.Fixed armrest

**AG-LY002****Hospital Electric Standing Wheelchair**

- Painted steel frame, upturned PU armrest, removable guard plate, rubber foam front and rear wheels, equipped with safety lights

**AG-LY123-43****Medical Electric Wheelchair**

- 1.Material: Spray plastic steel frame
- 2.Adjustable detachable PU armrest
- 3.Equipped with a safety lamp

**AG-LY110A****Medical Electric Wheelchair**

- 1.Material: Spray-folding steel frame
- 2.Rear bending handrail
- 3.Detachable foot rest
- 4.Rubber front and rear wheels
- 5.Load-capacity: 110kg

**AG-LY001****Hospital Wheel Chair**

- 1)Pipe: steel
- 2)Rear wheel diameter: 22 * 1.2
- 3)Front wheel diameter: 30 * 2.0
- 4)Rear Wheel: 24 inch PU + nylon wheel drum
- 5)Front wheel: Solid 6-inch
- 6)Total width: 675mm

**AG-803LB****Aluminium Alloy Wheelchair**

- 1.Alluminum alloy frame
- 2.Flip-up armrest
- 3.Solid castor

**LY338-4****Wheelchair(Can be Half-Lying)**

- 1.Length: 103cm
- 2.Vehicle height: 89cm
- 3.Vehicle width: 68cm
- 4.Seat width: 46cm

**LY338-12****Child with Cerebral Palsy Wheelchair**

- 1.Material:Aluminum alloy frame
- 2.Sponge cushion
- 3.Hydraulic design

**LY338-16****Hand Tricycle**

1. Cushion material: leather
2. Frame material: thick steel pipe paint frame
3. Seat width: 45cm
4. Armrest height: 77cm

**PL-10****Electric Crawler Climbing Machine**

1. Size: 1310 * 1200 (800) * 660 (excluding foot hanging)mm
2. The feet are not adjustable, the backrest is electrically adjustable, the imported motor, the imported control box, and the electric stand

**PL-11****Electric Crawler Climbing Machine**

1. Size: 1340 * 1210 * 650 (sitting)mm
920 * 1960 * 650 (590)mm (lying with armrests down)
2. The footrest and backrest can be electrically adjusted to lie flat, imported motor, imported control box, with toilet

**AG-WC001****Hospital Aluminum Alloy Wheel Chair**

Material: high quality 7003 aviation aluminum alloy pipes, thickness of 2.0 to 3.0

**LY338-1****Hospital Wheel Chair**

1. Sitting from the ground 50cm
2. Wheelchair height 89cm
3. Seat width 45cm rear wheel diameter 60cm

**LY338-15****Hand Tricycle**

1. The frame of the hand-cranked tricycle is made of thick steel pipes with strong stability.
2. Material: thick steel pipe
3. Vehicle length: 170(L)*95(H)*75(W)cm



AG-LY140



AG-LY128



AG-969H



TRA01



AG-965LH-B



AG-969H



AG-9145L



AG-9634L



AG-9636L



AG-9637L



AG-912L



AG-913L



AG-961L



AG-9122L-A



AG-9280L
Walking Stick



AG-9361L
Walking Stick



AG-920L
Walking Aid



AG-928L
Walking Stick



AG-9242L
Walking Aid



AG-9412L
Walking Aid



AG-9382L
Walking Aid



AG-9301L-1
Walking Aid



AG-9209L
Walking Aid



AG-933L
Walking Stick



AG-9112L
Walking Aid



AG-925L
Walking Stick



AG-LY894
Hospital Toilet Chair
50*23*76cm 7kg



AG-699L
Commode Chair
Aluminum alloy frame
4 pcs casters, 2 with brake



AG-897
Commode Chair
Steel frame with plastoc
Commode seat



AG-693
Commode Chair
Powder coating steel frame;
Fixed armrest,foldable



AG-7921L
Bath Chair
power coating steel frame



AG-7986L
Bath Chair
aluminum alloy frame with plastic seat



LQX-040007
Shower stool
Aluminum alloy,hard seat cushi
8-stop adjustment



LQX-040002
Shower Stool
1.Aluminum alloy,washable
cold-proof foam soft
cushion(thickness 5.5mm)
2.3-stop adjustment

**RC-2000I****Hypothermia Therapy Apparatus**

1. Temperature Control Range
-4 ~40 available to adjust, cooling speed is no less than 2 /min.
2. Blanket Surface Temperature
The temperature of cooling blanket or cooling cap is ± 1 around water temperature. Surface temperature unevenness is no more than 2
3. Body Temperature Setting Range: 31 - 42
4. Display Interface: Metal dome array control panel, LCD 240*128, LED backlight

**XY-K-SISS-C****Dual Channeloutput Neurotrosis Therapy Muscle Stimulator With Trolley**

- Eight channels pulse output(low frequency impulse)
Intensity could be adjusted indently
Negative pressure: -38KPa

**XY-K- SHOCKMAS****Extracorporeal Shock Wave Therapy**

- 12.1 touch screen
Working frequency: 1~25Hz
Impact times: 100~9900 times, stepping 100 times
Impact pressure: 1-5.5bar
Six kinds of applicator: standard, frequency conversion, frequency conversion, deep, focused and acupoint.
200 preset prescription, customized unlimited
Built-in Human Anatomy

**XY-K-SGN-1****Compression Therapy**

1. Special for hand
2. 2 treatment mdes
3. Keeping time: 5s, 10s, 15s, 20s, 25s, etc
4. 50~260mmHg
5. Double pumps

**XY-K-SJD-B****Transcutaneous Electrical Nerve Stimulator Six Channels TENS Device**

- Six independent rectangular wave pulse output
Pulse frequency: 2-160Hz adjustable
Treatment time: 5min, 10min, 15min, 20min, 25min, 30min
Continuous output, slow intermittent output, fast intermittent output

**FSLY-AJ07****Moxibustion Fumigation Instrument**

- Product specification: 400*400* H1350mm
Safety type: class B
Rated voltage/frequency: 220V ~ 50HZ
Rated power: 200W
Temperature setting: 30~60
Time setting: 1~60min
Product weight: 9.5kg



CQJS-CQ-30

Far Infrared Physiotherapy Lamp



SZXL-003

Infrared Physiotherapy Lamp



SZXL-006

Infrared Physiotherapy Lamp



XYG-500IB

Digital Display Function
Infrared Therapy Device



XYG-500IVB

Physiotherapy And
Rehabilitation Equipment
Infrared And Laser
Therapy Device



XY-K-PZG-II

Physiotherapy And Rehabilitation
Equipment Infrared Polarized
Light Therapy



JYRX-10

Foot Washer



JYRX-03-25

Mobile Bath

**B001****Back Correction**

Size: S/M /L/XL/XXL

Color: white & black

**H001****Neck Guard**

Size:Free

N.W:0.04KG

Packing Size:38*39*73cm

H005**Knee Pads**

Size: S/M

Color: blue, Complexion & black

H006**Ankle Support**

Size:Free

**H004****Bracers**

Color: blue, Complexion & black

H007**Single Shoulder Pads**

Size:Free

H010**Waist Support**

Size: S/M /L/XL/XXL

T005**Abdominal Band**

Size: S/M /L/XL

Color: Khaki & black

**KDZJ-JZ-010****Cervical Collar Cervical Collar Flexible (Recommendation) New****KDZJ-ZB-004****Arm Sling(Enhanced)**

Size: 27-40cm

KDZJ-ZW-001**Palm Wrist Orthosis**

Size: S/M /L

KDZJ-ZW-002**Fixed Infusion Splint**

S 12-18 M 18-24

**KDZJ-KB-001****Adult Hinged Hip Anduction Orthosis**

Waist circumference 70-100cm

KDZJ-ZH-002**Adjustable Ankle-Foot Brace**

S <19 M 20-26 L >27

**KDZJ-XB-006****Knee Ankle-Foot Orthosis****SH-03****Adjustable Elbow Joint Brace Fixation Brace**



LS-50HD

Vertical Pressure Steam Sterilizer (Digital Display Automation)

Technical data LS-50HDI(automatic)
 Chamber volume 50L(φ340×550) mm
 Working pressure 0.22MPa
 Working temperature 134
 Max working pressure 0.23 Mpa
 Heat average $\leq \pm 1$
 Timer 0~99min or 0~99hour59min
 Adjustment of temperature 105~134
 Power 3Kw/AC220V.50Hz
 Overall dimension 510×470×1130(mm)
 Transport dimension 590×590×1280(mm)
 G.W/N.W 88Kg/ 68Kg

ZJ-N8A

Automatic Table Top Autoclave

Model	ZJ-N8A
Volume/L	40
Consumed power /W	1450
Working pressure/MPa	0.22
Working temperature/	134
Cavity size /mm	φ170X360
Dimension/mm	370x345x365
G.W/KG	34
Packing Size	640x480x430



MW-KJ400

Air Sterilizer



AG-S1

Mobile Air Sterilization Station

**FYTS-36H**

Medical UV Air Sterilizer

**FYST-30S**

Medical UV Air Sterilizer

**FYKX-B600**

Medical UV Air Sterilizer

**FYKX-Y1000**

Medical UV Air Sterilizer

**FYKX-G1200**

Medical UV Air Sterilizer

**KXD-B-600**

Medical Plasma Air Sterilizer

- 1.Applicable volume (m³) :60
- 2.Air volume (m³/h) :600
- 3.Size: (L×W×H) : 900×380×160 (mm)
- 4.Weight: 18 kg

**KXZ-B-600**

Medical Plasma Air Sterilizer

- 1.Appearance size: (L×W×H) : 900×380×160 (mm)
- 2.Weight: 18 kg
- 3.Noise: 55 db (A) or less
- 4.Uv radiation illuminance: ≥ 17,000 w/cm
- 5.Uv leakage: < 0.1 w/cm
- 6.The killing rate of bacteria in aerosol chamber was > 99.99%
- 7.The mean extinction rate of natural bacteria (disinfection time: 60min) was > 90.00%
- 8.Input power: ≤155W
- 9.Power supply: AC 220V 50Hz
- 10.Applicable volume (m³) :60
- 11.Air volume (m³/h) :600

**KXD-Y-600**

Medical Plasma Air Sterilizer

- 1.Appearance size: (L×W×H) : 280×390×660 (mm)
- 2.Weight: 20 kg
- 3.Noise: 55 db (A) or less
- 4.The killing rate of bacteria in aerosol chamber was > 99.99%
- 5.The mean extinction rate of natural bacteria (disinfection time: 60min) was > 95.00%
- 6.Input power: ≤103W
- 7.Power supply: AC 220V 50Hz
- 8.Applicable volume (m³) :60
- 9.Air volume (m³/h) :1000

**KXD-X-600**

Medical Plasma Air Sterilizer

- 1.Applicable volume (m³) :60
- 2.Air volume (m³/h) :600
- 3.Size: (L×W×H) : 620×620×355 (mm)
- 4.Weight: 20 kg

**KXZ-Y-1500**

Medical Plasma Air Sterilizer

- 1.Applicable volume (m³) :150
- 2.Air volume (m³/h) :1500
- 3.Size: (L×W×H) : 520×450×1800 (mm)
- 4.Weight: 65 kg



SQ-D-60

H₂O₂ Low Temperature Plasma Sterilizer (Prdinary Type)



SQ-D-100 H₂O₂

H₂O₂ Low Temperature Plasma Sterilizer (Prdinary Type)



SD-D-130

Automatic Plasma Sterilizer



SQ-D2-100

H₂O₂ Low Temperature Plasma Sterilizer (Cassette Type)



SQ-XH120

Ethylene Oxide Sterilizer



SQ-H40

Ethylene Oxide Sterilizer



SQ-H80

Ethylene Oxide Sterilizer



SQ-H600

Ethylene Oxide Sterilizer



SQ-E2

Ethylene Oxide Sterilizer



SQ-E3

Ethylene Oxide Sterilizer



SCAJ-004

Plasma Air Disinfection Machine



SCAJ-005

Plasma Air Disinfection Machine



SCAJ-006

Plasma Air Disinfection Machine



BHC-1300 A2

(Single) Biological Safety Cabinet



LDO-9023A

Forced Air Drying Oven



LVO-0B (6020)

Drying Oven (Vacuum Oven)





DL-60D

Ultrasonic Cleaner

2L, 150 × 140 × 100mm



DL-180D

Ultrasonic Cleaner

6L, 300 × 150 × 150mm



DL-380E

Ultrasonic Cleaner

10.5L, 500 × 140 × 150mm



DL-120A

Ultrasonic Cleaner

3L, 240 × 140 × 100mm



DL-180A

Ultrasonic Cleaner

6L, 300 × 150 × 150mm



SB-300DTY

Four Frequency Ultrasonic Cleaner



JP-120ST, 38L

Multi Frequency Ultrasonic Cleaner



JP-360ST, 135L

Multi Frequency Ultrasonic Cleaner



JP-300G, 99L

Multi Frequency Ultrasonic Cleaner



JP-600G, 264L

Multi Frequency Ultrasonic Cleaner



JP-020S, 3.2L

Multi Frequency Ultrasonic Cleaner



JP-080, 22L

PLUS Multi Frequency Ultrasonic Cleaner



LCB-1BU

Clean Bench



LCB-1F

Clean Bench



DG-CL32 (3.2L,6.5L,10L)

Ultrasonic Cleaning Machine



DGZ-4L

Distilled Water Machine

Volume:4L

Distillation volume:1L/H



SK-O180-S

Shaker

Orbital diameter 20mm

Max. load capacity (with platform) 3kg



RE100-S

Rotary Evaporator

Speed Range 20-200rpm

Display (speed, temperature, time) LED



ZJ-YAZD-5 (5L, 10L, 20L)

Stainless Steel Water Distiller

Hydraulic discharge: 5L/h



ZJ-SZ-96

Glass Water Distiller

Hydraulic discharge: 1600ml/h
Single distillation



ZG-16

Electronic Chain 304 Stainless
Steel Pass-Through Box

Inner dimension: 360*440*420mm



ZG-6

All 304 Stainless Steel
Pass-Through Box

Inner dimension: 280*320*320mm

ENT EQUIPMENT



XAHY-002

Video Laryngoscope

Display Screen : 3.0 " full color LCD Monitor
Resolution: 960*480



SMT-I-B

Video Laryngoscope

LCD display 3"HD wide angle LCD



HJ-1

Laryngoscope

Size: 185MM,
Main function: check laryngoscope



BD-1

Nasoscope

Size: 175mm,
Main function: electro-optic nose



WZYH-402F6

Otoscope

Outer packing size: 61X41.5X41.5cm,
Main function: otoscopy



NBSF-002

Facial Features Checker Set

Size: the diameter of the tube
main function: facial feature check



SHMQ-001

Laryngoscope

Type A for adults
• Large: Length: 165mm
• Medium: Length: 135mm
• Trumpet: Length: 105mm

Type B children
• Large size: 100mm
• Trumpet: 75mm



AG-XD207

Dialysis chair

Two motors control seat tilting, up and down respectively, another motor lets back and leg section move as unite

Head board and arm board are manual adjusted The chair can apply to various postures

Specification

Chair Dimension:1700mm(Curve Length)*560mm

Height:570mm(min.)---830mm(max)

Head section turn:-15°~ 25°

Back section lift:0 ~ 80°

Leg section turn:0 ~ -90°

Arm board swing out:0 ~ 45°

Arm board height adjustable:100mm

Arm board slide:100mm

Arm board declining angle adjustment:-15°~ 10 °

Arm board dimension:450*160mm

Trendelenburg & reverse trendelenburg:0 ~ 12°

Arm board concave radian:R108



AG-XD205

Manual Blood Collection Chair

Seat width : 600mm
Seat width, including armrests : 880mm
Total length : 1880mm
Total weight : 70kg
Height: 530mm
Caster :100mm
Back cushion : 190*490*120mm
Cushion : PU foam
Upholstery : PVC leather
Frame : Q235 steel
Safe maximum load : 240kg
Back segment angle : -12°-75°
Trendelenburg : -12°
Leg segment angle : -80°-12°



AG-XD208A

Manual Blood Collection Chair

Back Section : (0°~75°)
Leg Section : (-80°~0°)
Size of castors : 4*φ100mm
Cushion : PVC
Weight : 85kg
Max weight : 200kg



AG-XD101

Electric Blood Collection Chair

Chair Dimension: 1700mm(Curve Length)*560mm

Height: 570mm(min.)---830mm(max)

Head section turn: -15°~ 25°

Back section lift: 0 ~ 80°

Leg section turn: 0 ~ -90°

Arm Board swing out: 0 ~ 45°

Arm board height adjustment: 100mm

Arm board slide: 100mm

Arm board declining angle adjustment: -15°~ 10°

Arm board dimension: 450*160mm

Trend and reverse trend: 0 ~ 12°

Arm board Concave Radian: R108



AG-XD107

Electric Blood Collection Chair

Introduction:

Chair Dimension: 1700mm(Curve Length)*560mm

Height: 570mm(min.)---830mm(max)

Head section turn: -15°~ 25°

Back section lift: -5 ~ 70°

Leg section turn: -65 ~ 5°

Foot support telescopic: 100mm

Foot support turn: 0-90°

Fixed angle of seat section: 5°

Arm Board swing out: 0 ~ 45°

Arm board height adjustment: 100mm

Arm board slide: 100mm

Arm board declining angle adjustment: -15°~ 10°

Arm board dimension: 450*160mm

Trend and reverse trend: 0 ~ 12°

Arm board Concave Radian: R108



AG-XD206B

Electric Blood Collection Chair

Total Length : 1950mm \pm 20mm

Seat width : 600mm(total width 900mm including armrest) \pm 20mm

Seat height : 580~800mm \pm 20mm

Backrest length : 870mm \pm 20mm

Leg rest length : 530mm \pm 20mm

Armrest Dimension : L540*W190*D(40x2)mm \pm 20mm

Height of armrest and seat : 200~250mm \pm 20mm

Chassis Dimension : 930mm \times 680mm \pm 20mm

Pillow size : 400mm \times 230mm \times 80mm \pm 20mm

Backrest Adjustment : (-12 $^{\circ}$ ~75 $^{\circ}$) \pm 5

Legrest Adjustment : (-75 $^{\circ}$ ~12 $^{\circ}$) \pm 5 $^{\circ}$

Weight : 93KGS \pm 3KGS

Safe Maximum Load : 240KGS

Motor : 3



AG-KL01

Dialysis Chair

Backrest adjustment:-10 $^{\circ}$ ~75 $^{\circ}$ \pm 5 $^{\circ}$

Legrest adjustment:-80 $^{\circ}$ ~12 $^{\circ}$ \pm 5 $^{\circ}$

Realize the Trenberg position of plus or minus 12 degrees, can present the dialysis position of the legs greater than 12 degrees;

INSPECTION CENTER&CLINICAL EXAMINATION

**H-TU01**

Blood Collection Tube

1ml 2ml 3ml 4ml 5ml 6ml 7ml

**BH-1**Extension Tube with
Injection Set Adapters**CD-038**

Disposable Syringe

1ml 2ml 3ml 5ml 10ml 20ml 30ml 50ml

**MS-IS-2**

Syringe with Needle 31G

0.3ml 0.5ml 1ml

**JXYK-002**

Bottle Infusion Set

**JXYK-001**

Disposable Infusion Needle

0.6~0.8MM(23G-21G)

**FN-04**Detained Needle
Needle

8 G、20 G、22 G、24 G

**JXYK-003**

Disposable Infusion Set

**FN-01**Pediatrics Disposable
Infusion Set**14-26G**Penholder Type Indwelling
Needle

8 G、20 G、22 G、24 G

**AG-HC004**

Paper Frame IV Dressing

**AG-GS01**

Sterile Gauze Swab

OR ROOM CONSUMABLES

**ST-4**

Vinyl Gloves

**ST-2**

Nitrile Gloves

**BCRP01F2**

Latex Exam Gloves

**ST-1**

Latex Surgical Gloves

**BH-CVC**Central Venous
Catheter**BH-HC**Hemodialysis
Catheter Kit**BH-BL01**

A-V Blood Line

**ZJSD-2**

Endotracheal Tube

**ZJSD-1**

Endotracheal Tube

**A60**

Hemodialyser

**MDW-124**Medical Protective
Clothing(Non-Sterile)**KJ-S001**

Surgical Gown

**KJ-M006**

Doctor Clothes

**MDW-05**Medical Nurse Suit
(Short Sleeve)**MC116-B**

Drainage Bag

**MC115-A**

Enema Flushing Bag

**MC106-C**Enterocolia Type
Drainage Tube**MC113-C**

Mask With Nebulizer

**KL1009**

Protective Mask

**MDW-515**

Mask

OR ROOM CONSUMABLES



MDW-308

Disposable Medical Mask



MC-126A

Disposable Sterile Mouth Bag



MC127-A

Disposable Sterile Production Package



MC-128A

Disposable Sterile Dental Surgical pack



MC-128B

Disposable Sterile Laparoscope Surgical pack



MC-128C

Disposable Sterile Chest Surgical Pack



MC-128D

Disposable Joint Replacement Pack



MC-128E

Disposable Sterile Brain Surgical Pack



MC-128F

Disposable Peripheral Intervention Pack



MC-128G

Disposable Sterile Cystoscope Pack



MC-128H

Disposable Sterile Single Pouch Ophthalmic Pack



MC-128I

Disposable Sterile Surgical Standard Pack



MC-128J

Disposable Sterile Orthopedic Pack(chest)



MC-128K

Disposable Sterile Orthopedic Pack(face)



MC-128L

Disposable Sterile HIP REPLACEMENT Pack



MC-128M

Disposable Sterile Implant Pack



MC-128N

Disposable Sterile TUR Pack(Urology Set)



MC-127A


Disposable Sterile Midwife Pack





MC-127B

Disposable Sterile Caesarean Section Pack




 +267 72 697 418

 sales@scmpharmaceutical.co.bw

 www.scmpharmaceutical.co.bw

 P O Box 277 ABG, Sebele, gaborone

 Plot 22039, unit 1, gaborone
West industrial

